



## THE AIDEN at OAKMONT

THE AIDEN - COASTAL MODERN

**4 Bedrooms • 3 Bathrooms • 3-Car Garage • 2,399 ft<sup>2</sup> Living Area • 3,220 ft<sup>2</sup> Under Roof**

Step into the Aiden, a versatile 4-bedroom, 3-bathroom floor plan designed for both relaxation and entertaining. An elegant foyer leads into a spacious living area connected to a covered lanai perfect for enjoying Florida's sunshine. The deluxe kitchen serves as the home's heart, ideal for cooking, hosting, and gathering. The master suite is a private retreat, complete with a luxurious bath and large walk-in closet. A flexible room can be customized into a home office, extra bedroom, or whatever suits your needs. And with ICI Homes, you have the freedom to personalize this space – if you can dream it, we can build it.

\* Renderings may vary from actual home. Please see disclaimer for more details.

**\$1,320**

**ESTIMATED SAVINGS**



This home has a HERS Score of 59 and is estimated to save you \$2,555 on your annual utility bills vs. a resale home.



# THE AIDEN

4 Bedrooms • 3 Bathrooms • 3-Car Garage

<b>Oakmont</b> Gainesville, FL	<b>Available in</b> Oakmont 50
-----------------------------------	-----------------------------------

Living Area: 2,399 ft<sup>2</sup> Under Roof: 3,220 ft<sup>2</sup>

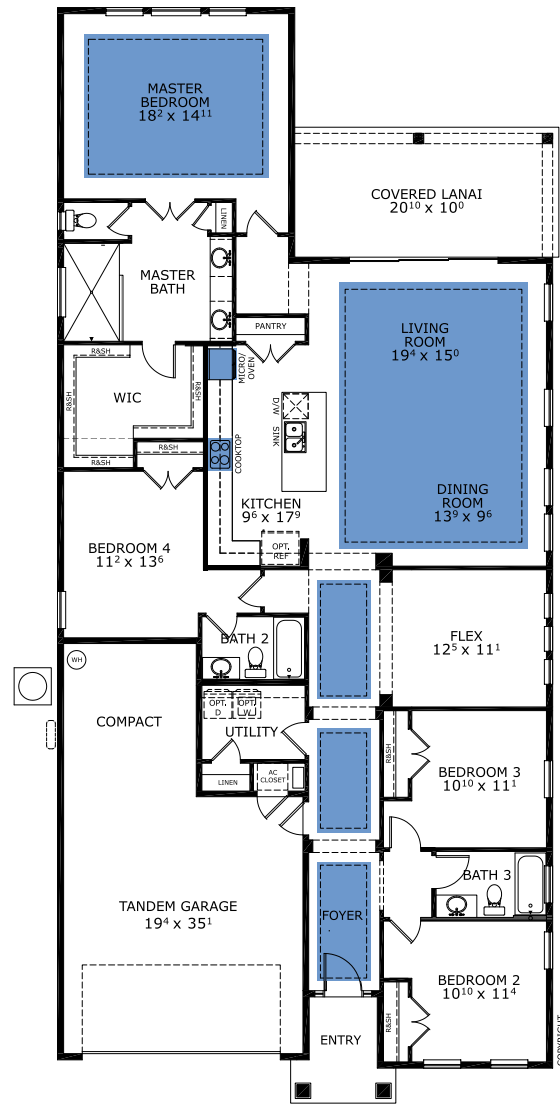
## THE WEST INDIES



## THE CRAFTSMAN



### FIRST FLOOR



Customize this plan, it's easy! (844) 349-6401 or visit ICIHomes.com

©1994-2026 ICI Homes™ is a registered trademark whose divisions operate under CBC1267313, CBC1262114, CBC1262120, CBC1264300, CBC1265743, CRC1333091, and CBC1257263. Features may be plan specific and vary. Please consult a Sales Associate for specific feature information. All new ICI Homes come with a HBW 2-10 warranty. Certain elevations may have additional fees. Prices may not include lot premiums, upgrades, and options. Inventory home completion date may vary. All prices subject to change without notice. All plans are property of ICI Homes and cannot be copied or used without permission. Prices, promotions, incentives, features, options, amenities, floor plans, elevations, site maps, designs, materials, and dimensions are for illustrative purposes only and subject to change without notice. Plans should not be relied upon as representation express or implied of final sizes, locations, features or dimensions. Square footage and dimensions are estimated and may vary from description. All HERS ratings and savings are calculated by a third party energy rating service. Actual savings will depend on a number of factors, including but not limited to daily activities, home maintenance practices, household size, use of appliances, lighting and internal climate control systems, lot orientation, and surrounding climate and weather conditions. Created on 02/18/2026: \_\_\_\_\_ Garage Orientation R / L: \_\_\_\_\_

