



## THE ARBOR II at WOODHAVEN

THE FARMHOUSE

MOVE IN READY

**2 Bedrooms • 2 Bathrooms • 2-Car Garage • 1,562 ft<sup>2</sup> Living Area • 2,167 ft<sup>2</sup> Under Roof**

The Arbor II offers 1,562 square feet of beautifully designed living space perfect for comfortable Florida living. Enter through a welcoming foyer into an open-concept dining and living area, seamlessly connected to a screened lanai for year-round enjoyment. The spacious kitchen opens to the main living space, ideal for both everyday meals and entertaining. Retreat to the master suite with its walk-in closet and serene master bath, while an additional bedroom and nearby study provide versatile space for guests, work, or hobbies. Discover a warm, functional home layout that makes every day feel special.

\* Renderings may vary from actual home. Please see disclaimer for more details.

**\$1,816**

ESTIMATED SAVINGS



This home has a HERS Score of 62 and is estimated to save you \$1,816 on your annual utility bills vs. a resale home.

# THE ARBOR II

2 Bedrooms • 2 Bathrooms • 2-Car Garage

MOVE IN READY

## Woodhaven

Townhome Series | Spruce Lake Townhomes - Lot 123

6401 Roseberry Court  
Port Orange, FL, 32128

Living Area: 1,562 ft<sup>2</sup>

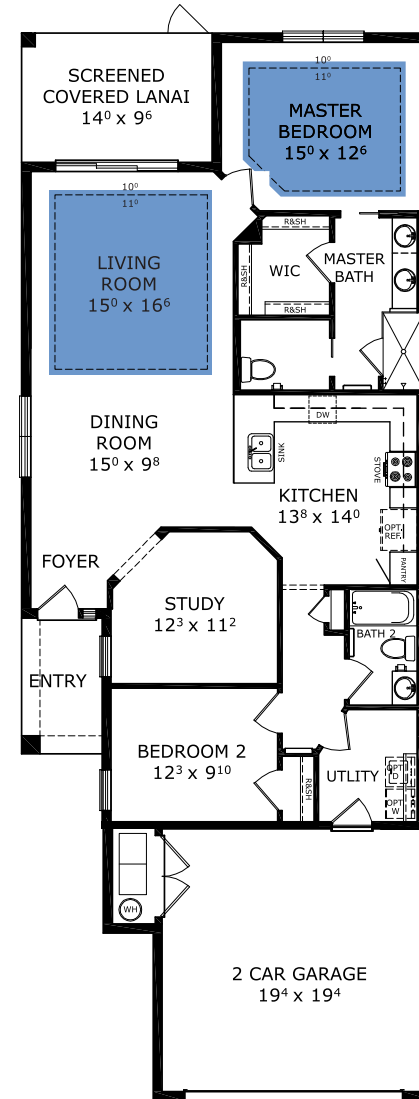
### Structural Options Included in This Home:

- ✓ Tray Ceiling - Living Room
- ✓ Tray Ceiling - Master Suite
- ✓ Woodhaven Layout
- ✓ Laundry Sink-Rough In
- ✓ Interior Package: White/Forte

And much more....

Priced at: **\$445,900**

## FIRST FLOOR



This Arbor II is a Move In Ready! [Speak to a Sales Counselor \(844\) 349-6401](https://www.icihomes.com) or visit [ICIHomes.com](https://www.icihomes.com)

©1994-2025 ICI Homes™ is a registered trademark whose divisions operate under CBC1264300, CBC1262120, CRC1333091, CBC1262114, CBC1257263 and CBC1265743. Features may be plan specific and vary. Please consult a Sales Associate for specific feature information. All new ICI Homes come with a HBW 2-10 warranty. Certain elevations may have additional fees. Prices may not include lot premiums, upgrades, and options. Inventory home completion date may vary. All prices subject to change without notice. All plans are property of ICI Homes and cannot be copied or used without permission. Prices, promotions, incentives, features, options, amenities, floor plans, elevations, site maps, designs, materials, and dimensions are for illustrative purposes only and subject to change without notice. Plans should not be relied upon as representation express or implied of final sizes, locations, features or dimensions. Square footage and dimensions are estimated and may vary from description. All HERS ratings and savings are calculated by a third party energy rating service. Actual savings will depend on a number of factors, including but not limited to daily activities, home maintenance practices, household size, use of appliances, lighting and internal climate control systems, lot orientation, and surrounding climate and weather conditions. Created on 12/06/2025: \_\_\_\_\_ Garage Orientation R / L: \_\_\_\_\_

