



THE ARI at VOLUSIA/FLAGLER OFFSITE

THE ARI - COASTAL MODERN

4 Bedrooms • 3 Bathrooms • 3-Car Garage • 3,672 ft² Living Area • 5,684 ft² Under Roof

Step into the Ari, a three-story haven where elegance meets versatility. The first floor offers a spacious flex room, perfect as a game room, guest suite, or home gym, with a covered lanai just outside for morning coffees or evening gatherings. On the second floor, an open-concept kitchen flows into a light-filled dining and living area, ideal for entertaining or cozy nights in. A private study adds a quiet work-from-home space. The third floor is your personal retreat, with a luxurious master suite and private balcony. With ICI Homes' unique customization options, the Ari adapts to fit your lifestyle, bringing your dream home to life.

* Renderings may vary from actual home. Please see disclaimer for more details.

\$3,450

ESTIMATED SAVINGS



This home has a HERS Score of 69 and is estimated to save you \$3,450 on your annual utility bills vs. a resale home.

THE ARI

4 Bedrooms • 3 Bathrooms • 3-Car Garage

Volusia/Flagler
Offsite

Ormond Beach, FL

Available in

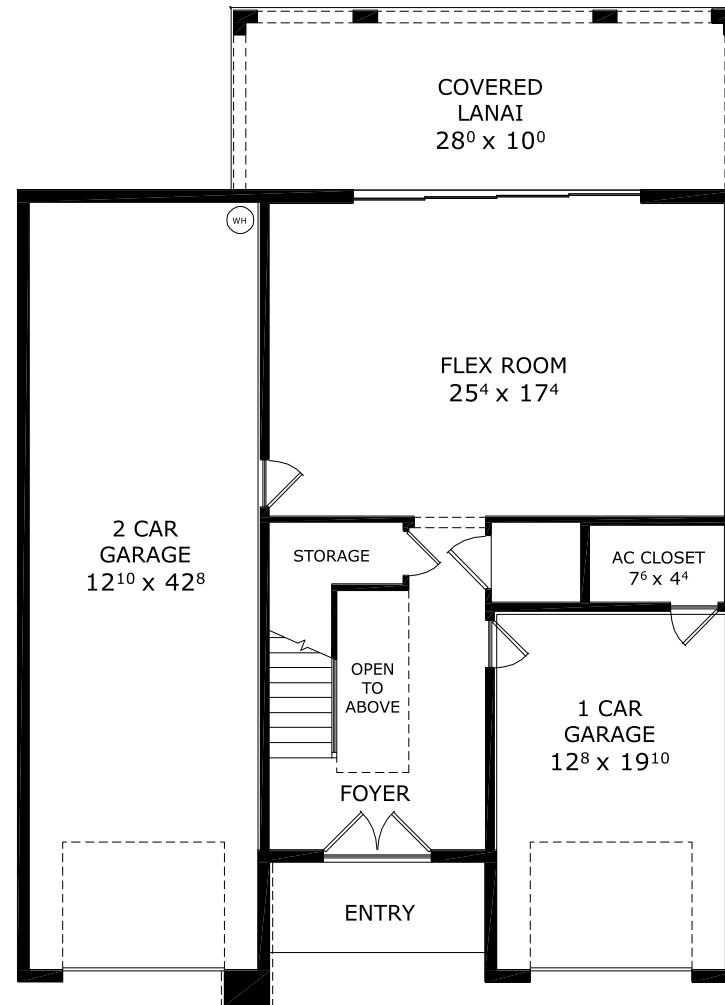
Volusia Flagler On Your Lot 2

Living Area: 3,672 ft² Under Roof: 5,684 ft²

THE MODERN



FIRST FLOOR



Customize this plan, it's easy! (844) 349-6401 or visit [ICIHomes.com](https://www.ICIHomes.com)

©1994-2025 ICI Homes™ is a registered trademark whose divisions operate under CBC1264300, CBC1262120, CRC1333091, CBC1262114, CBC1257263 and CBC1265743. Features may be plan specific and vary. Please consult a Sales Associate for specific feature information. All new ICI Homes come with a HBW 2-10 warranty. Certain elevations may have additional fees. Prices may not include lot premiums, upgrades, and options. Inventory home completion date may vary. All prices subject to change without notice. All plans are property of ICI Homes and cannot be copied or used without permission. Prices, promotions, incentives, features, options, amenities, floor plans, elevations, site maps, designs, materials, and dimensions are for illustrative purposes only and subject to change without notice. Plans should not be relied upon as representation express or implied of final sizes, locations, features or dimensions. Square footage and dimensions are estimated and may vary from description. All HERS ratings and savings are calculated by a third party energy rating service. Actual savings will depend on a number of factors, including but not limited to daily activities, home maintenance practices, household size, use of appliances, lighting and internal climate control systems, lot orientation, and surrounding climate and weather conditions. Created on 12/06/2025: _____ Garage Orientation R / L: _____



THE ARI

4 Bedrooms • 3 Bathrooms • 3-Car Garage

Volusia/Flagler
Offsite

Ormond Beach, FL

Available in

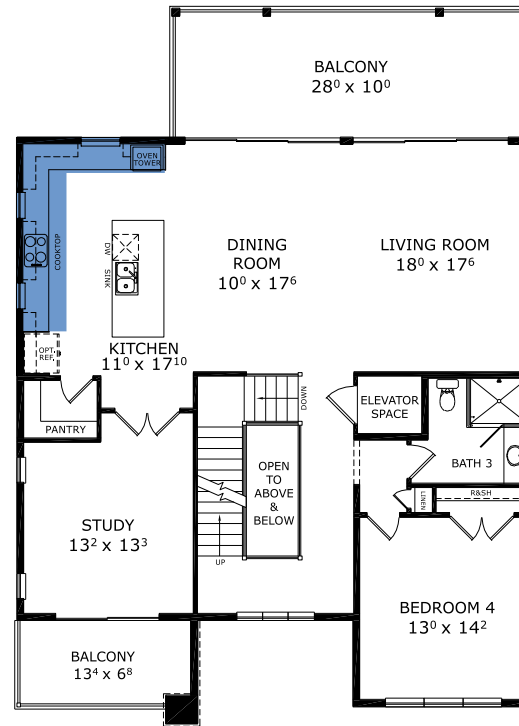
Volusia Flagler On Your Lot 2

Living Area: 3,672 ft² Under Roof: 5,684 ft²

THE MODERN



SECOND FLOOR



Customize this plan, it's easy! (844) 349-6401 or visit [ICIHomes.com](https://www.ICIHomes.com)

©1994-2025 ICI Homes™ is a registered trademark whose divisions operate under CBC1264300, CBC1262120, CRC1333091, CBC1262114, CBC1257263 and CBC1265743. Features may be plan specific and vary. Please consult a Sales Associate for specific feature information. All new ICI Homes come with a HBW 2-10 warranty. Certain elevations may have additional fees. Prices may not include lot premiums, upgrades, and options. Inventory home completion date may vary. All prices subject to change without notice. All plans are property of ICI Homes and cannot be copied or used without permission. Prices, promotions, incentives, features, options, amenities, floor plans, elevations, site maps, designs, materials, and dimensions are for illustrative purposes only and subject to change without notice. Plans should not be relied upon as representation express or implied of final sizes, locations, features or dimensions. Square footage and dimensions are estimated and may vary from description. All HERS ratings and savings are calculated by a third party energy rating service. Actual savings will depend on a number of factors, including but not limited to daily activities, home maintenance practices, household size, use of appliances, lighting and internal climate control systems, lot orientation, and surrounding climate and weather conditions. Created on 12/06/2025: _____ Garage Orientation R / L: _____



THE ARI

4 Bedrooms • 3 Bathrooms • 3-Car Garage

Volusia/Flagler
Offsite

Ormond Beach, FL

Available in

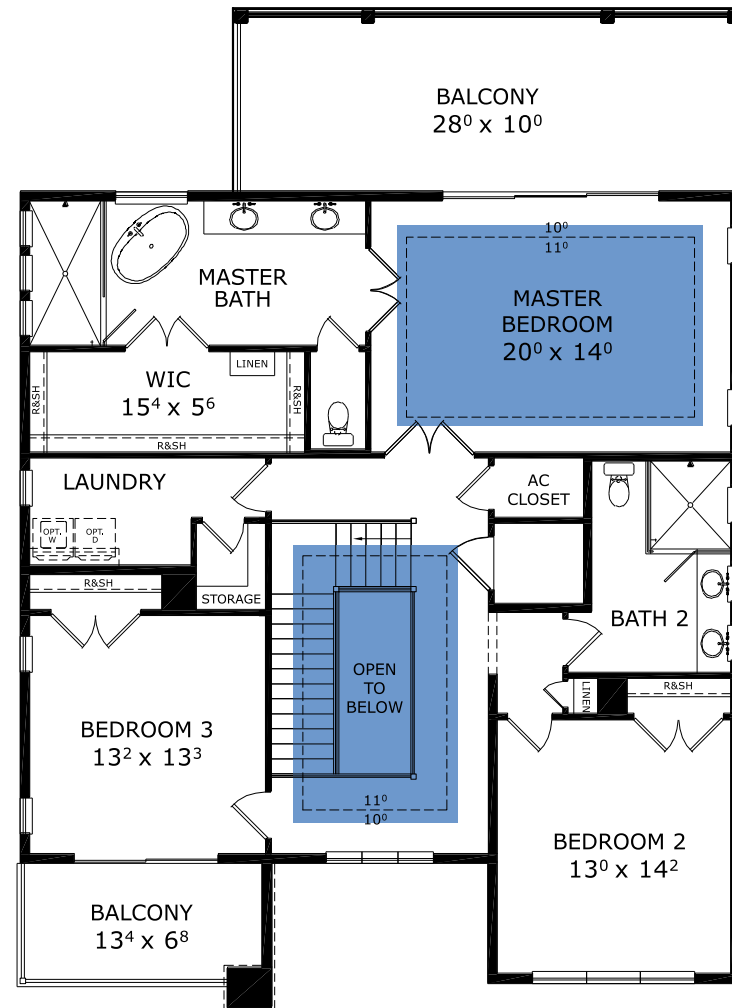
Volusia Flagler On Your Lot 2

Living Area: 3,672 ft² Under Roof: 5,684 ft²

THE MODERN



THIRD FLOOR



Customize this plan, it's easy! (844) 349-6401 or visit [ICIHomes.com](https://www.ICIHomes.com)

©1994-2025 ICI Homes™ is a registered trademark whose divisions operate under CBC1264300, CBC1262120, CRC1333091, CBC1262114, CBC1257263 and CBC1265743. Features may be plan specific and vary. Please consult a Sales Associate for specific feature information. All new ICI Homes come with a HBW 2-10 warranty. Certain elevations may have additional fees. Prices may not include lot premiums, upgrades, and options. Inventory home completion date may vary. All prices subject to change without notice. All plans are property of ICI Homes and cannot be copied or used without permission. Prices, promotions, incentives, features, options, amenities, floor plans, elevations, site maps, designs, materials, and dimensions are for illustrative purposes only and subject to change without notice. Plans should not be relied upon as representation express or implied of final sizes, locations, features or dimensions. Square footage and dimensions are estimated and may vary from description. All HERS ratings and savings are calculated by a third party energy rating service. Actual savings will depend on a number of factors, including but not limited to daily activities, home maintenance practices, household size, use of appliances, lighting and internal climate control systems, lot orientation, and surrounding climate and weather conditions. Created on 12/06/2025: _____ Garage Orientation R / L: _____

