



THE AVERY at OAKMONT

THE AVERY - CRAFTSMAN

3 Bedrooms • 2 Bathrooms • 2-Car Garage • 1,728 ft² Living Area • 2,384 ft² Under Roof

The Avery is a welcoming 3-bedroom, 2-bath home featuring an open-concept layout that balances style with functionality. Enjoy an expansive living area where the living room, deluxe kitchen, and dining space flow effortlessly, perfect for gatherings. A private master suite offers a tranquil retreat, with dual vanities, a walk-in closet, and a spacious shower. The covered lanai, ideal for outdoor relaxation, connects beautifully with the indoor spaces. Plus, with ICI Homes' customization options, from layout changes to additional features, the Avery becomes a home uniquely crafted for your lifestyle.

* Renderings may vary from actual home. Please see disclaimer for more details.

\$1,052

ESTIMATED SAVINGS



This home has a HERS Score of 55 and is estimated to save you \$1,986 on your annual utility bills vs. a resale home.

THE AVERY

3 Bedrooms • 2 Bathrooms • 2-Car Garage

Oakmont
Gainesville, FL

Available in
Oakmont 50

Living Area: 1,728 ft² **Under Roof:** 2,384 ft²

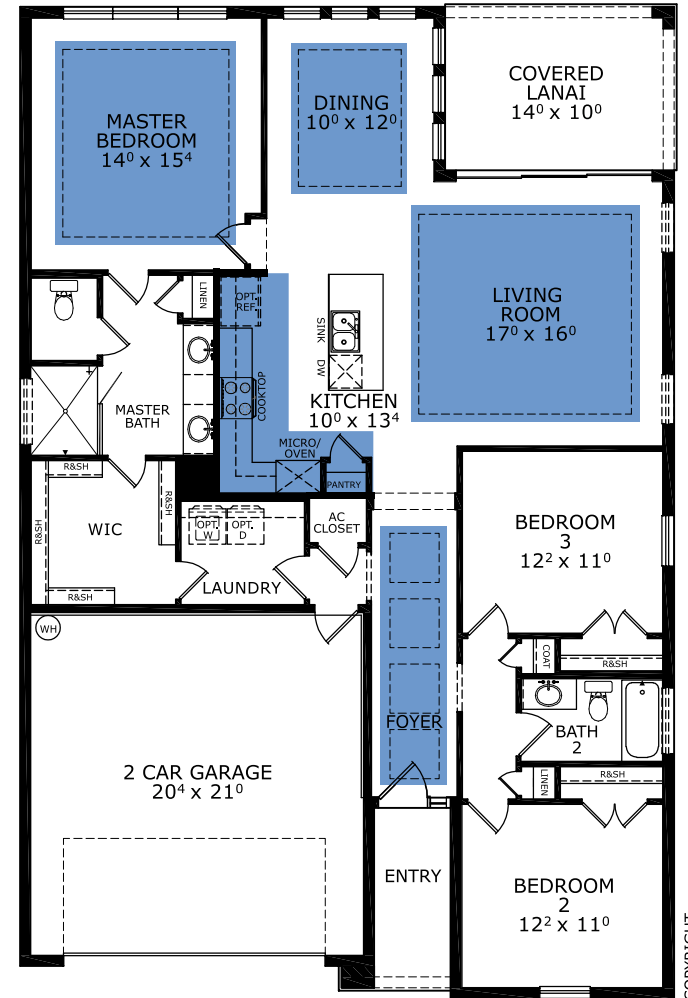
THE FARMHOUSE



THE WEST INDIES



FIRST FLOOR



Customize this plan, it's easy! (844) 349-6401 or visit [ICIHomes.com](https://www.ICIHomes.com)

©1994-2026 ICI Homes™ is a registered trademark whose divisions operate under CBC1267313, CBC1262114, CBC1262120, CBC1264300, CBC1265743, CRC1333091, and CBC1257263. Features may be plan specific and vary. Please consult a Sales Associate for specific feature information. All new ICI Homes come with a HBW 2-10 warranty. Certain elevations may have additional fees. Prices may not include lot premiums, upgrades, and options. Inventory home completion date may vary. All prices subject to change without notice. All plans are property of ICI Homes and cannot be copied or used without permission. Prices, promotions, incentives, features, options, amenities, floor plans, elevations, site maps, designs, materials, and dimensions are for illustrative purposes only and subject to change without notice. Plans should not be relied upon as representation express or implied of final sizes, locations, features or dimensions. Square footage and dimensions are estimated and may vary from description. All HERS ratings and savings are calculated by a third party energy rating service. Actual savings will depend on a number of factors, including but not limited to daily activities, home maintenance practices, household size, use of appliances, lighting and internal climate control systems, lot orientation, and surrounding climate and weather conditions. Created on 02/18/2026: _____ Garage Orientation R / L: _____

