



THE AVINA at VOLUSIA/FLAGLER OFFSITE

THE AVINA - MEDITERRANEAN

3 Bedrooms • 3 Bathrooms • 2-Car Garage • 2,306 ft² Living Area • 3,039 ft² Under Roof

The Avina is a spacious 2,350 sq ft home offering an inviting blend of style and comfort. With a deluxe kitchen opening to a light-filled living room and dining area, it's perfect for entertaining and everyday living. The master suite, complete with a spa-like bath and walk-in closet, serves as your private retreat. Enjoy year-round outdoor living on the covered lanai or take advantage of the flex room to create a home office or cozy den. And with ICI Homes, you can customize every detail—from extending the lanai to creating a unique, personal space—making the Avina truly yours.

* Renderings may vary from actual home. Please see disclaimer for more details.

\$1,048

ESTIMATED SAVINGS



This home has a HERS Score of 65 and is estimated to save you \$2,352 on your annual utility bills vs. a resale home.

THE AVINA

3 Bedrooms • 3 Bathrooms • 2-Car Garage

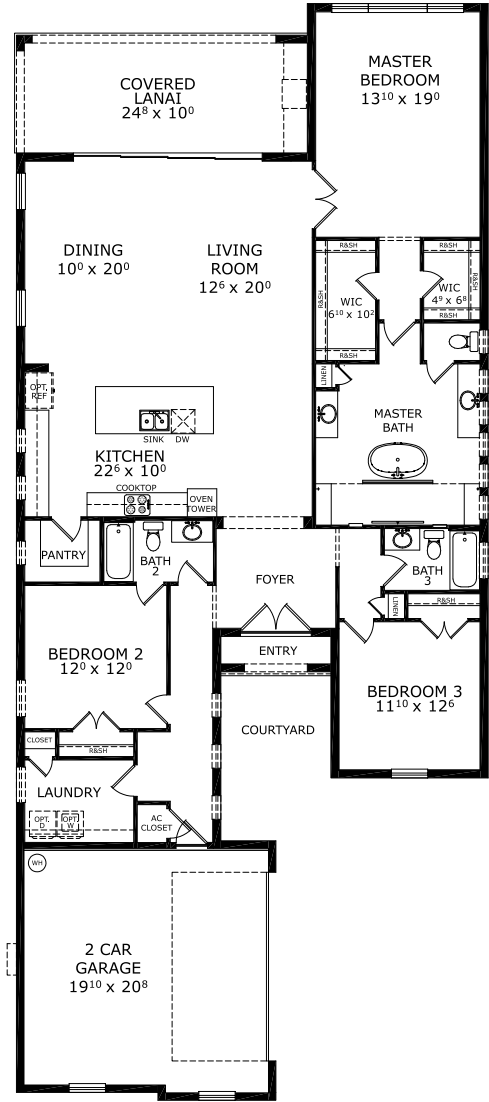
Volusia/Flagler
Offsite
Ormond Beach, FL

Available in
Volusia Flagler On Your Lot

Living Area: 2,306 ft² Under Roof: 3,039 ft²



FIRST FLOOR



Customize this plan, it's easy! (844) 349-6401 or visit [ICIHomes.com](https://www.ICIHomes.com)

©1994-2026 ICI Homes™ is a registered trademark whose divisions operate under CBC1267313, CBC1262114, CBC1262120, CBC1264300, CBC1265743, CRC1333091, and CBC1257263. Features may be plan specific and vary. Please consult a Sales Associate for specific feature information. All new ICI Homes come with a HBW 2-10 warranty. Certain elevations may have additional fees. Prices may not include lot premiums, upgrades, and options. Inventory home completion date may vary. All prices subject to change without notice. All plans are property of ICI Homes and cannot be copied or used without permission. Prices, promotions, incentives, features, options, amenities, floor plans, elevations, site maps, designs, materials, and dimensions are for illustrative purposes only and subject to change without notice. Plans should not be relied upon as representation express or implied of final sizes, locations, features or dimensions. Square footage and dimensions are estimated and may vary from description. All HERS ratings and savings are calculated by a third party energy rating service. Actual savings will depend on a number of factors, including but not limited to daily activities, home maintenance practices, household size, use of appliances, lighting and internal climate control systems, lot orientation, and surrounding climate and weather conditions. Created on 02/19/2026: _____ Garage Orientation R / L: _____

