



## THE AVONDALE at SEVEN PINES

THE AVONDALE - COASTAL

QUICK MOVE IN

**4 Bedrooms • 3.5 Bathrooms • 3-Car Garage • 3,102 ft<sup>2</sup> Living Area • 4,056 ft<sup>2</sup> Under Roof**

The Avondale is a spacious 4-bedroom, 3.5-bath home with over 3,100 sq. ft. of beautifully designed living space. The two-story foyer leads to a gourmet kitchen, formal dining room, and a cozy living area that opens to a covered lanai, ideal for entertaining. The main-floor master suite is a private retreat with a deluxe bath and walk-in closet, while the second floor offers three additional bedrooms and a versatile game room. With ICI Homes' renowned customization, the Avondale can be tailored to fit your unique vision, turning this inviting space into your perfect dream home.

\* Renderings may vary from actual home. Please see disclaimer for more details.

**\$3,149**

**ESTIMATED SAVINGS**



This home has a HERS Score of 58 and is estimated to save you \$3,149 on your annual utility bills vs. a resale home.

# THE AVONDALE

4 Bedrooms • 3.5 Bathrooms • 3-Car Garage

QUICK MOVE IN

Seven Pines  
Elite Series | 60' Wide Lots | Rear Load - Lot 114  
5849 Canopy Row Street  
Jacksonville, FL, 32224

Living Area: 3,102 ft<sup>2</sup>

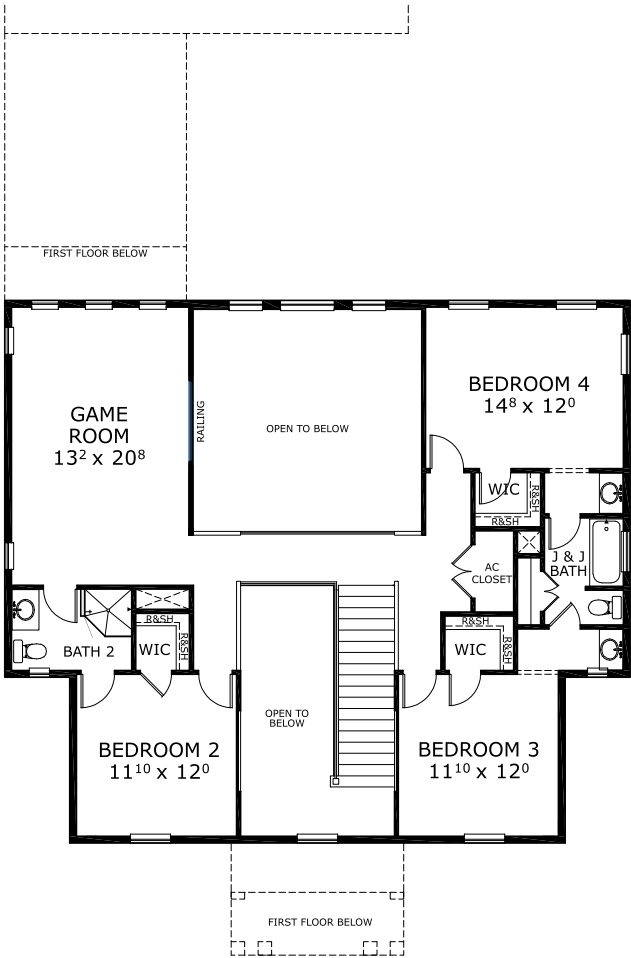
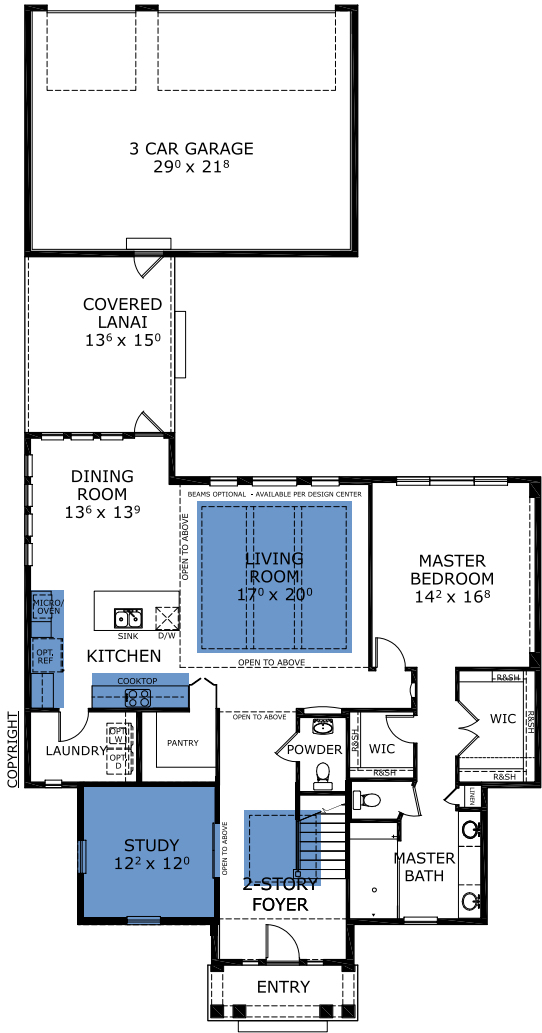
### Structural Options Included in This Home:

- ✓ Kitchen Deluxe - NFD
- ✓ Study ilo Flex Room
- ✓ Tray Ceiling - Foyer
- ✓ Tray Ceiling - Living Room
- ✓ Outlet-Floor Plug Brass
- ✓ Railing ilo Knee Wall
- ✓ Sink-Rough In
- ✓ Remove Peanut wall.
- ✓ Full Privacy wall at Lanai at 7 AFF
- ✓ NO HEADER FOR BARN DOOR AT STUDY REINFORCE STUDS
- ✓ REMOVE NICHE AT MASTER BEDROOM ENTRANCE AND GALLERY. SEE RED LINES
- ✓ NO LUGGAGE SHELF IN WI CLOSET AT MASTER BEDROOM

And much more....

Priced at: \$999,768

## FIRST-SECOND FLOOR



This Avondale is a Quick Move In! [Speak to a Sales Counselor \(844\) 349-6401](https://www.icihomes.com) or visit [ICIHomes.com](https://www.icihomes.com)

©1994-2025 ICI Homes™ is a registered trademark whose divisions operate under CBC1264300, CBC1262120, CRC1333091, CBC1262114, CBC1257263 and CBC1265743. Features may be plan specific and vary. Please consult a Sales Associate for specific feature information. All new ICI Homes come with a HBW 2-10 warranty. Certain elevations may have additional fees. Prices may not include lot premiums, upgrades, and options. Inventory home completion date may vary. All prices subject to change without notice. All plans are property of ICI Homes and cannot be copied or used without permission. Prices, promotions, incentives, features, options, amenities, floor plans, elevations, site maps, designs, materials, and dimensions are for illustrative purposes only and subject to change without notice. Plans should not be relied upon as representation express or implied of final sizes, locations, features or dimensions. Square footage and dimensions are estimated and may vary from description. All HERS ratings and savings are calculated by a third party energy rating service. Actual savings will depend on a number of factors, including but not limited to daily activities, home maintenance practices, household size, use of appliances, lighting and internal climate control systems, lot orientation, and surrounding climate and weather conditions. Created on 12/06/2025: \_\_\_\_\_ Garage Orientation R / L: \_\_\_\_\_

