



## THE BALDWIN at SEVEN PINES

THE BALDWIN - CLASSIC REVIVAL

**5 Bedrooms • 4 Bathrooms • 3-Car Garage • 3,782 ft<sup>2</sup> Living Area • 4,983 ft<sup>2</sup> Under Roof**

The Baldwin is a 3,782 sq. ft., 5-bedroom, 4-bath haven that combines luxury and livability. The open-plan design connects a light-filled living room to a gourmet kitchen, complete with a spacious island and cozy nook. The main-floor master suite is a private retreat with a spa-like bath and walk-in closet. A covered lanai offers an ideal outdoor living space, while the second floor boasts a game room surrounded by three bedrooms with walk-in closets. As with all ICI Homes, the Baldwin is fully customizable, allowing you to bring your vision to life with our expert design team.

\* Renderings may vary from actual home. Please see disclaimer for more details.

**\$3,567**

**ESTIMATED SAVINGS**



This home has a HERS Score of 59 and is estimated to save you \$3,567 on your annual utility bills vs. a resale home.

# THE BALDWIN

5 Bedrooms • 4 Bathrooms • 3-Car Garage

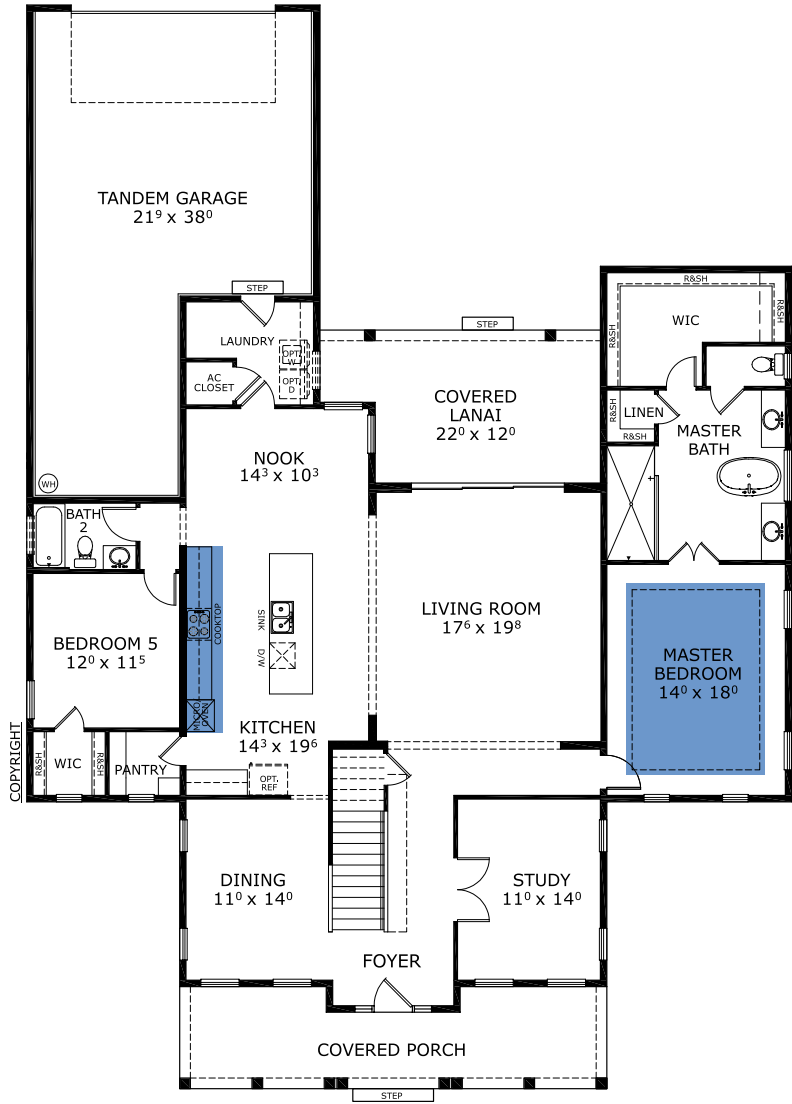
Seven Pines  
Jacksonville, FL

Available in  
Seven Pines 70 RL

Living Area: 3,782 ft<sup>2</sup> Under Roof: 4,983 ft<sup>2</sup>



## FIRST FLOOR



Customize this plan, it's easy! (844) 349-6401 or visit [ICIHomes.com](https://www.icihomes.com)

©1994-2025 ICI Homes™ is a registered trademark whose divisions operate under CBC1264300, CBC1262120, CRC1333091, CBC1262114, CBC1257263 and CBC1265743. Features may be plan specific and vary. Please consult a Sales Associate for specific feature information. All new ICI Homes come with a HBW 2-10 warranty. Certain elevations may have additional fees. Prices may not include lot premiums, upgrades, and options. Inventory home completion date may vary. All prices subject to change without notice. All plans are property of ICI Homes and cannot be copied or used without permission. Prices, promotions, incentives, features, options, amenities, floor plans, elevations, site maps, designs, materials, and dimensions are for illustrative purposes only and subject to change without notice. Plans should not be relied upon as representation express or implied of final sizes, locations, features or dimensions. Square footage and dimensions are estimated and may vary from description. All HERS ratings and savings are calculated by a third party energy rating service. Actual savings will depend on a number of factors, including but not limited to daily activities, home maintenance practices, household size, use of appliances, lighting and internal climate control systems, lot orientation, and surrounding climate and weather conditions. Created on 12/06/2025: \_\_\_\_\_ Garage Orientation R / L: \_\_\_\_\_





# THE BALDWIN

5 Bedrooms • 4 Bathrooms • 3-Car Garage

Seven Pines  
Jacksonville, FL

Available in  
Seven Pines 70 RL

Living Area: 3,782 ft<sup>2</sup> Under Roof: 4,983 ft<sup>2</sup>

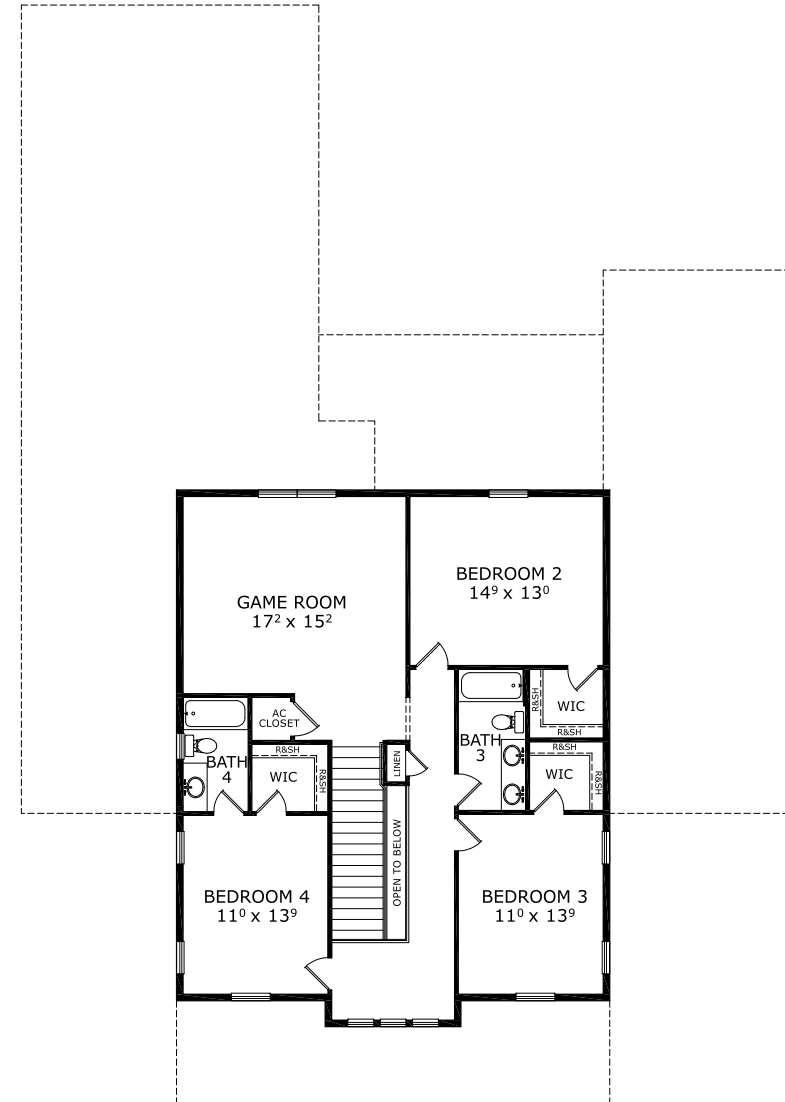
THE FARMHOUSE



THE COASTAL



## SECOND FLOOR



Customize this plan, it's easy! (844) 349-6401 or visit [ICIHomes.com](https://www.icihomes.com)

©1994-2025 ICI Homes™ is a registered trademark whose divisions operate under CBC1264300, CBC1262120, CRC1333091, CBC1262114, CBC1257263 and CBC1265743. Features may be plan specific and vary. Please consult a Sales Associate for specific feature information. All new ICI Homes come with a HBW 2-10 warranty. Certain elevations may have additional fees. Prices may not include lot premiums, upgrades, and options. Inventory home completion date may vary. All prices subject to change without notice. All plans are property of ICI Homes and cannot be copied or used without permission. Prices, promotions, incentives, features, options, amenities, floor plans, elevations, site maps, designs, materials, and dimensions are for illustrative purposes only and subject to change without notice. Plans should not be relied upon as representation express or implied of final sizes, locations, features or dimensions. Square footage and dimensions are estimated and may vary from description. All HERS ratings and savings are calculated by a third party energy rating service. Actual savings will depend on a number of factors, including but not limited to daily activities, home maintenance practices, household size, use of appliances, lighting and internal climate control systems, lot orientation, and surrounding climate and weather conditions. Created on 12/06/2025: \_\_\_\_\_ Garage Orientation R / L: \_\_\_\_\_

