



## THE BLOSSOM II at WOODHAVEN

THE FARMHOUSE **MODEL**

**3 Bedrooms • 3 Bathrooms • 2-Car Garage • 2,097 ft<sup>2</sup> Living Area • 2,751 ft<sup>2</sup> Under Roof**

The Blossom II is a 2,097 sq. ft. townhome with 3 bedrooms, 3 bathrooms, and an adaptable bonus room. The open main floor features a welcoming foyer, a cozy dining room, a bright living room, and a stylish kitchen with a central island and café area. The private master suite includes dual vanities, a walk-in shower, and a spacious closet, offering a serene retreat. Upstairs, you'll find an additional bedroom, bathroom, and a flexible bonus room. The Blossom II combines practicality and elegance, creating a townhome that's ideal for comfortable living.

\* Renderings may vary from actual home. Please see disclaimer for more details.

**\$788**

**ESTIMATED SAVINGS**



This home has a HERS Score of 68 and is estimated to save you \$1,864 on your annual utility bills vs. a resale home.

# THE BLOSSOM II

3 Bedrooms • 3 Bathrooms • 2-Car Garage

MODEL

## Woodhaven

Townhome Series | Spruce Lake Townhomes - Lot 086

6506 Roseberry Court  
Port Orange, FL, 32128

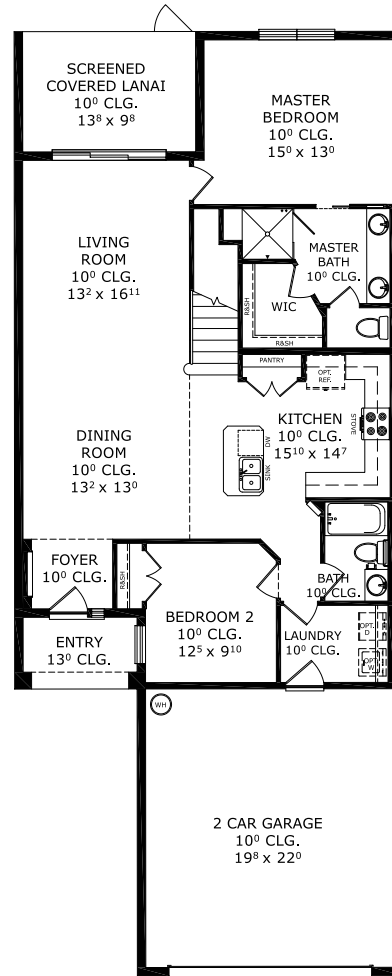
Living Area: 2,097 ft<sup>2</sup>

### Structural Options Included in This Home:

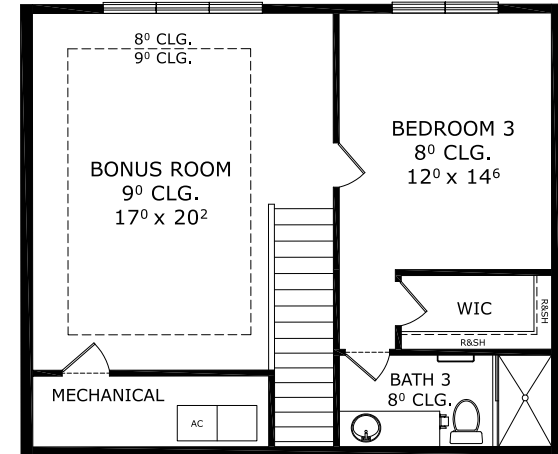
- ✓ Tray Ceiling - Game Room
- ✓ Laundry Sink-Rough In
- ✓ Interior Package White / Forte

And much more....

From: **\$427,900**



## FIRST-SECOND FLOOR



This Blossom II is a Model! **Speak to a Sales Counselor (844) 349-6401** or visit **ICIHomes.com**

©1994-2026 ICI Homes™ is a registered trademark whose divisions operate under CBC1267313, CBC1262114, CBC1262120, CBC1264300, CBC1265743, CRC1333091, and CBC1257263. Features may be plan specific and vary. Please consult a Sales Associate for specific feature information. All new ICI Homes come with a HBW 2-10 warranty. Certain elevations may have additional fees. Prices may not include lot premiums, upgrades, and options. Inventory home completion date may vary. All prices subject to change without notice. All plans are property of ICI Homes and cannot be copied or used without permission. Prices, promotions, incentives, features, options, amenities, floor plans, elevations, site maps, designs, materials, and dimensions are for illustrative purposes only and subject to change without notice. Plans should not be relied upon as representation express or implied of final sizes, locations, features or dimensions. Square footage and dimensions are estimated and may vary from description. All HERS ratings and savings are calculated by a third party energy rating service. Actual savings will depend on a number of factors, including but not limited to daily activities, home maintenance practices, household size, use of appliances, lighting and internal climate control systems, lot orientation, and surrounding climate and weather conditions. Created on 02/18/2026: \_\_\_\_\_ Garage Orientation R / L: \_\_\_\_\_

