



## THE BROOKLYN at MIDDLEBOURNE

THE BROOKLYN - FARMHOUSE

MODEL

**4 Bedrooms • 3 Bathrooms • 3-Car Garage • 3,234 ft<sup>2</sup> Living Area • 4,580 ft<sup>2</sup> Under Roof**

The Brooklyn is a 3,234 sq. ft. home designed with flexibility in mind. Featuring 4 bedrooms, 3 baths, and a three-car garage, it offers open living spaces, a gourmet kitchen, and a game room for family fun. The main-floor master suite is a private retreat with dual walk-in closets and a spa-inspired bath. The upstairs includes three additional bedrooms surrounding a central game room, perfect for play or relaxation. With options to extend the lanai or add a summer kitchen, the Brooklyn adapts easily to your lifestyle.

\* Renderings may vary from actual home. Please see disclaimer for more details.

**\$1,497**

**ESTIMATED SAVINGS**



This home has a HERS Score of 64 and is estimated to save you \$3,193 on your annual utility bills vs. a resale home.

# THE BROOKLYN

4 Bedrooms • 3 Bathrooms • 3-Car Garage

MODEL

## Middlebourne

Elite Series | 60' Wide Lots - Lot 153

851 Navigators Road  
St. Johns, FL, 32259

Living Area: 3,234 ft<sup>2</sup>

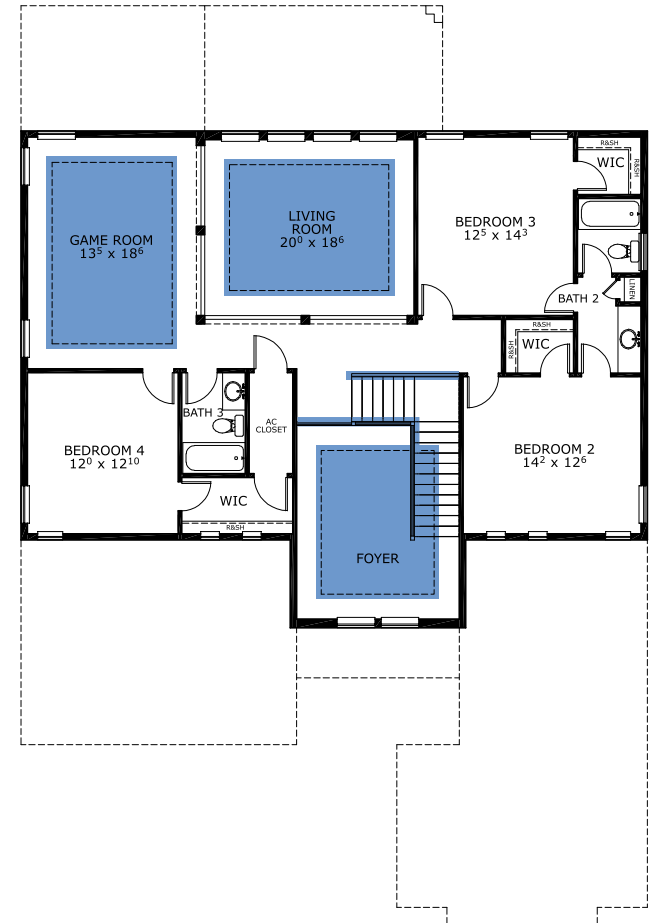
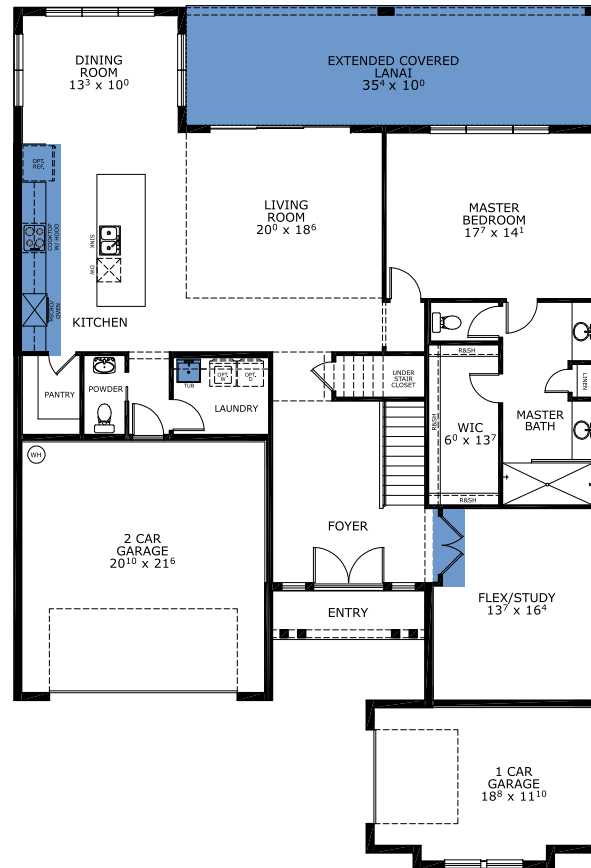
### Structural Options Included in This Home:

- ✓ Shower ilo Guest Tub @ Bath
- ✓ Kitchen Deluxe - NFD
- ✓ Extended Covered Lanai
- ✓ Study ilo Flex Room
- ✓ Tray Ceiling - Game Room
- ✓ Tray Ceiling - Foyer
- ✓ Tray Ceiling - Living Room
- ✓ Outlet-Floor Plug Brass
- ✓ Wood Railing @ Stairs
- ✓ Laundry Sink-Rough In

And much more....

From: **\$750,900**

## FIRST-SECOND FLOOR



This Brooklyn is a Model! [Speak to a Sales Counselor \(844\) 349-6401](https://www.icihomes.com) or visit [ICIHomes.com](https://www.icihomes.com)

©1994-2026 ICI Homes™ is a registered trademark whose divisions operate under CBC1267313, CBC1262114, CBC1262120, CBC1264300, CBC1265743, CRC1333091, and CBC1257263. Features may be plan specific and vary. Please consult a Sales Associate for specific feature information. All new ICI Homes come with a HBW 2-10 warranty. Certain elevations may have additional fees. Prices may not include lot premiums, upgrades, and options. Inventory home completion date may vary. All prices subject to change without notice. All plans are property of ICI Homes and cannot be copied or used without permission. Prices, promotions, incentives, features, options, amenities, floor plans, elevations, site maps, designs, materials, and dimensions are for illustrative purposes only and subject to change without notice. Plans should not be relied upon as representation express or implied of final sizes, locations, features or dimensions. Square footage and dimensions are estimated and may vary from description. All HERS ratings and savings are calculated by a third party energy rating service. Actual savings will depend on a number of factors, including but not limited to daily activities, home maintenance practices, household size, use of appliances, lighting and internal climate control systems, lot orientation, and surrounding climate and weather conditions. Created on 02/18/2026: \_\_\_\_\_ Garage Orientation R / L: \_\_\_\_\_

