



## THE COSTA MESA at OAKMONT

THE COSTA MESA - COASTAL

**4 Bedrooms • 3 Bathrooms • 3-Car Garage • 2,562 ft<sup>2</sup> Living Area • 3,371 ft<sup>2</sup> Under Roof**

Step into the Costa Mesa, a spacious home designed for comfort and connection. With four bedrooms, three baths, and an open layout, this home is ideal for both family time and entertaining. The heart of the home is the deluxe kitchen, with an oversized island and seamless flow into the living and dining areas. High ceilings fill the living space with light, creating a warm and inviting atmosphere. ICI Homes' customization options allow you to tailor every detail, from the flex room to the lanai, crafting a home that perfectly fits your lifestyle.

\* Renderings may vary from actual home. Please see disclaimer for more details.

**\$1,331**

**ESTIMATED SAVINGS**



This home has a HERS Score of 59 and is estimated to save you \$2,548 on your annual utility bills vs. a resale home.

# THE COSTA MESA

4 Bedrooms • 3 Bathrooms • 3-Car Garage

**Oakmont**  
Gainesville, FL

**Available In**  
Oakmont 65

**Living Area:** 2,562 ft<sup>2</sup> **Under Roof:** 3,371 ft<sup>2</sup>

## THE VERNACULAR - SIDING



## THE COASTAL MODERN - PC



## THE CRAFTSMAN



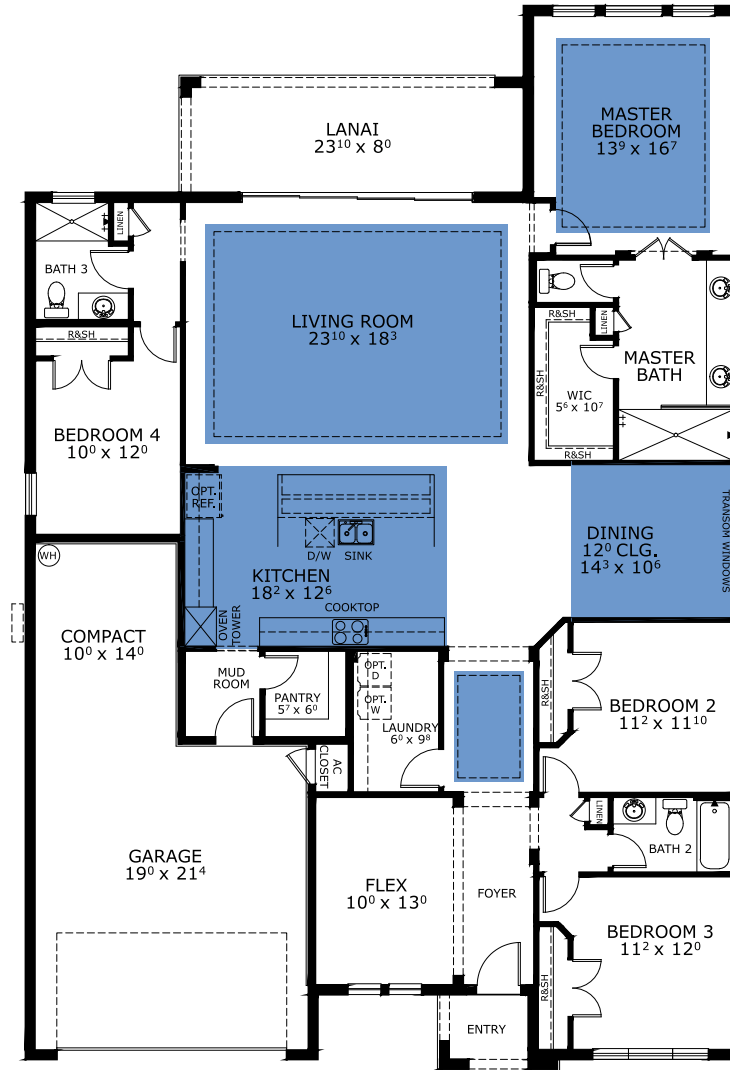
## THE CRAFTSMAN MODERN



## THE COTTAGE REVIVAL



## FIRST FLOOR



**Customize this plan, it's easy! (844) 349-6401 or visit [ICIHomes.com](https://www.ICIHomes.com)**

©1994-2026 ICI Homes™ is a registered trademark whose divisions operate under CBC1267313, CBC1262114, CBC1262120, CBC1264300, CBC1265743, CRC1333091, and CBC1257263. Features may be plan specific and vary. Please consult a Sales Associate for specific feature information. All new ICI Homes come with a HBW 2-10 warranty. Certain elevations may have additional fees. Prices may not include lot premiums, upgrades, and options. Inventory home completion date may vary. All prices subject to change without notice. All plans are property of ICI Homes and cannot be copied or used without permission. Prices, promotions, incentives, features, options, amenities, floor plans, elevations, site maps, designs, materials, and dimensions are for illustrative purposes only and subject to change without notice. Plans should not be relied upon as representation express or implied of final sizes, locations, features or dimensions. Square footage and dimensions are estimated and may vary from description. All HERS ratings and savings are calculated by a third party energy rating service. Actual savings will depend on a number of factors, including but not limited to daily activities, home maintenance practices, household size, use of appliances, lighting and internal climate control systems, lot orientation, and surrounding climate and weather conditions. Created on 04/17/2026: \_\_\_\_\_ Garage Orientation R / L: \_\_\_\_\_

