



THE EGRET at VOLUSIA/FLAGLER OFFSITE

THE EGRET - MEDITERRANEAN

3 Bedrooms • 3 Bathrooms • 2-Car Garage • 3,137 ft² Living Area • 4,432 ft² Under Roof

The Egret is a luxurious 3,137-square-foot home with three bedrooms, three baths, and a two-car garage, designed for both elegance and comfort. The open layout connects a deluxe kitchen, dining room, and spacious living room, extending to a covered lanai for seamless indoor-outdoor living. The private master suite features dual walk-in closets, a spa-like bath, and an adjoining exercise space. Two additional bedrooms and a private study complete the home, offering versatility and privacy. With ICI Homes' customization options, the Egret can be tailored to perfectly suit your lifestyle and tastes.

* Renderings may vary from actual home. Please see disclaimer for more details.

\$1,505

ESTIMATED SAVINGS



This home has a HERS Score of 58 and is estimated to save you \$2,987 on your annual utility bills vs. a resale home.

THE EGRET

3 Bedrooms • 3 Bathrooms • 2-Car Garage

Volusia/Flagler

Offsite

Ormond Beach, FL

Available In

Volusia Flagler On Your Lot 2

Living Area: 3,137 ft² Under Roof: 4,432 ft²

THE TUSCAN



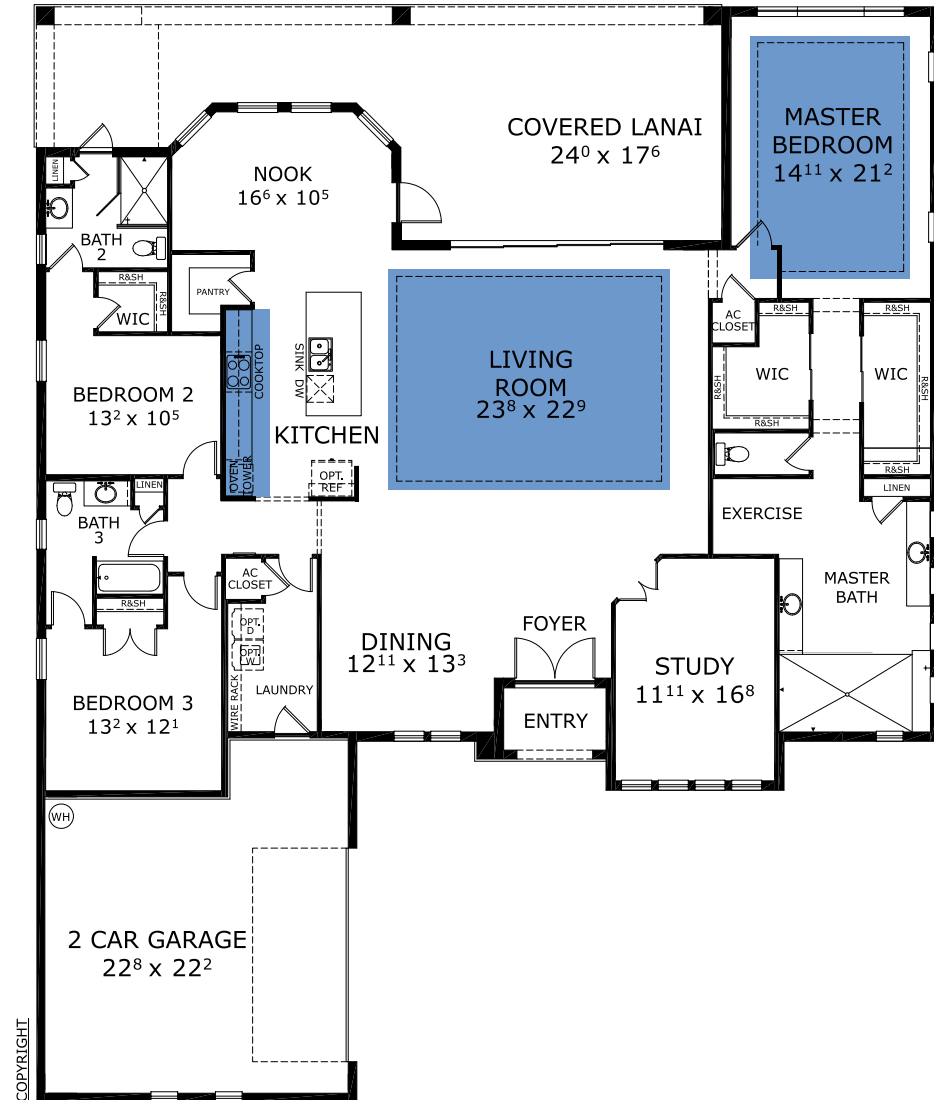
THE WEST INDIES



THE TUSCAN II



FIRST FLOOR



COPYRIGHT

Customize this plan, it's easy! (844) 349-6401 or visit ICIHomes.com

©1994-2026 ICI Homes™ is a registered trademark whose divisions operate under CBC1267313, CBC1262114, CBC1262120, CBC1264300, CBC1265743, CRC1333091, and CBC1257263. Features may be plan specific and vary. Please consult a Sales Associate for specific feature information. All new ICI Homes come with a HBW 2-10 warranty. Certain elevations may have additional fees. Prices may not include lot premiums, upgrades, and options. Inventory home completion date may vary. All prices subject to change without notice. All plans are property of ICI Homes and cannot be copied or used without permission. Prices, promotions, incentives, features, options, amenities, floor plans, elevations, site maps, designs, materials, and dimensions are for illustrative purposes only and subject to change without notice. Plans should not be relied upon as representation express or implied of final sizes, locations, features or dimensions. Square footage and dimensions are estimated and may vary from description. All HERS ratings and savings are calculated by a third party energy rating service. Actual savings will depend on a number of factors, including but not limited to daily activities, home maintenance practices, household size, use of appliances, lighting and internal climate control systems, lot orientation, and surrounding climate and weather conditions. Created on 04/17/2026: _____ Garage Orientation R / L: _____

