



## THE FIJI at OAKMONT

THE COASTAL

**4 Bedrooms • 3.5 Bathrooms • 2-Car Garage • 3,100 ft<sup>2</sup> Living Area • 4,022 ft<sup>2</sup> Under Roof**

The Fiji is a 3,100-square-foot, four-bedroom, three-and-a-half-bath home designed for comfort and style. The open-concept living area flows from a spacious living room to a deluxe kitchen and dining space, with easy access to a covered lanai perfect for outdoor enjoyment. The first-floor master suite offers a luxurious retreat with dual walk-in closets and a spa-like bath, while a flex room adds versatile living space. Upstairs, three bedrooms and a large game room complete the layout. With ICI Homes' customization options, you can make the Fiji uniquely yours.

\* Renderings may vary from actual home. Please see disclaimer for more details.

# \$1,700

**ESTIMATED SAVINGS**



This home has a HERS Score of 61 and is estimated to save you \$3,383 on your annual utility bills vs. a resale home.

# THE FIJI

4 Bedrooms • 3.5 Bathrooms • 2-Car Garage

**Oakmont**  
Gainesville, FL

**Available in**  
Oakmont 50 RL

**Living Area:** 3,100 ft<sup>2</sup> **Under Roof:** 4,022 ft<sup>2</sup>

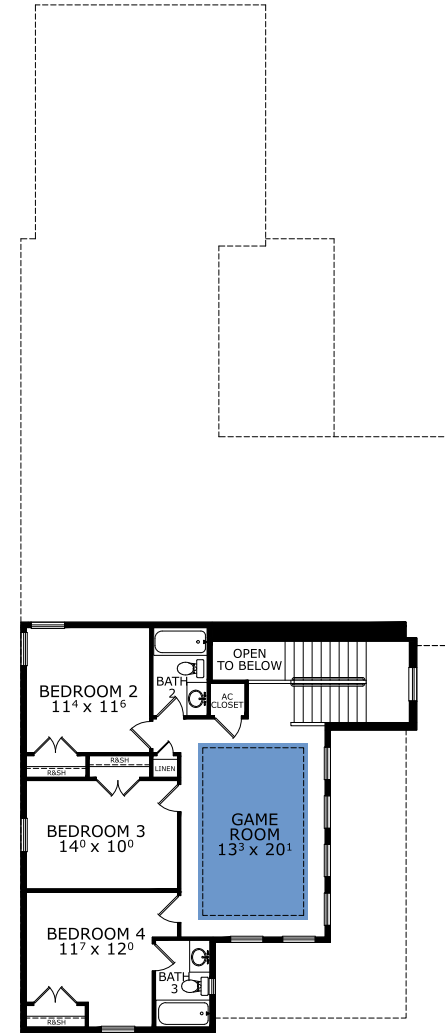
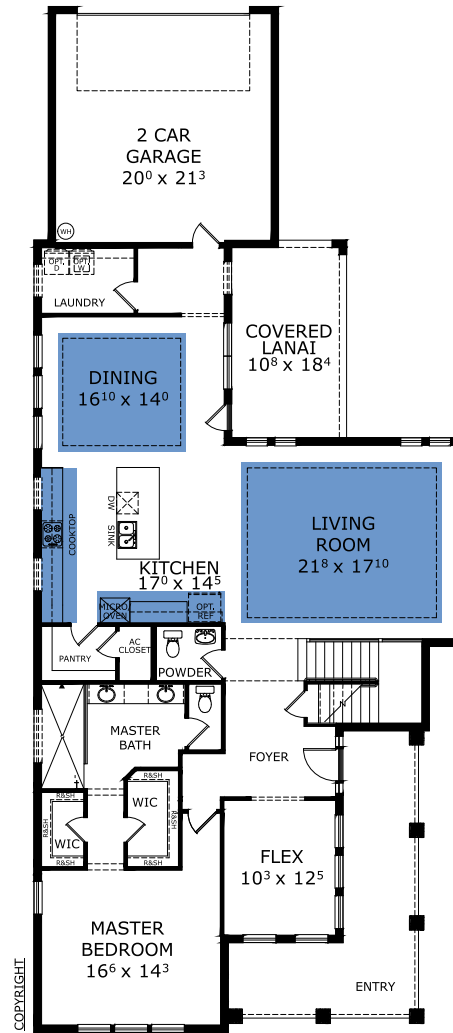
THE FARMHOUSE



THE TRANSITIONAL



## FIRST-SECOND FLOOR



**Customize this plan, it's easy! (844) 349-6401 or visit [ICIHomes.com](https://www.ICIHomes.com)**

©1994-2026 ICI Homes™ is a registered trademark whose divisions operate under CBC1267313, CBC1262114, CBC1262120, CBC1264300, CBC1265743, CRC1333091, and CBC1257263. Features may be plan specific and vary. Please consult a Sales Associate for specific feature information. All new ICI Homes come with a HBW 2-10 warranty. Certain elevations may have additional fees. Prices may not include lot premiums, upgrades, and options. Inventory home completion date may vary. All prices subject to change without notice. All plans are property of ICI Homes and cannot be copied or used without permission. Prices, promotions, incentives, features, options, amenities, floor plans, elevations, site maps, designs, materials, and dimensions are for illustrative purposes only and subject to change without notice. Plans should not be relied upon as representation express or implied of final sizes, locations, features or dimensions. Square footage and dimensions are estimated and may vary from description. All HERS ratings and savings are calculated by a third party energy rating service. Actual savings will depend on a number of factors, including but not limited to daily activities, home maintenance practices, household size, use of appliances, lighting and internal climate control systems, lot orientation, and surrounding climate and weather conditions. Created on 02/18/2026: \_\_\_\_\_ Garage Orientation R / L: \_\_\_\_\_

