



## THE FONTANA at OAKMONT

THE FONTANA - COASTAL

**3 Bedrooms • 2 Bathrooms • 2-Car Garage • 1,650 ft<sup>2</sup> Living Area • 2,173 ft<sup>2</sup> Under Roof**

The Fontana is a 1,650-square-foot, three-bedroom, two-bath home with an open-concept design. The spacious living room connects seamlessly to a modern kitchen and dining area, leading to a covered lanai that's perfect for relaxation. The master suite offers a private retreat with a walk-in closet and en-suite bath, while two additional bedrooms provide flexible living options. With ICI Homes' customization options, you can personalize the Fontana to suit your lifestyle, from an upgraded kitchen to an expanded lanai, creating a home that feels uniquely yours.

\* Renderings may vary from actual home. Please see disclaimer for more details.

**\$1,993**

**ESTIMATED SAVINGS**



This home has a HERS Score of 59 and is estimated to save you \$1,993 on your annual utility bills vs. a resale home.



# THE FONTANA

**3 Bedrooms • 2 Bathrooms • 2-Car Garage**

**Oakmont**  
Gainesville, FL

**Available in**  
Oakmont 50

**Living Area:** 1,650 ft<sup>2</sup> **Under Roof:** 2,173 ft<sup>2</sup>

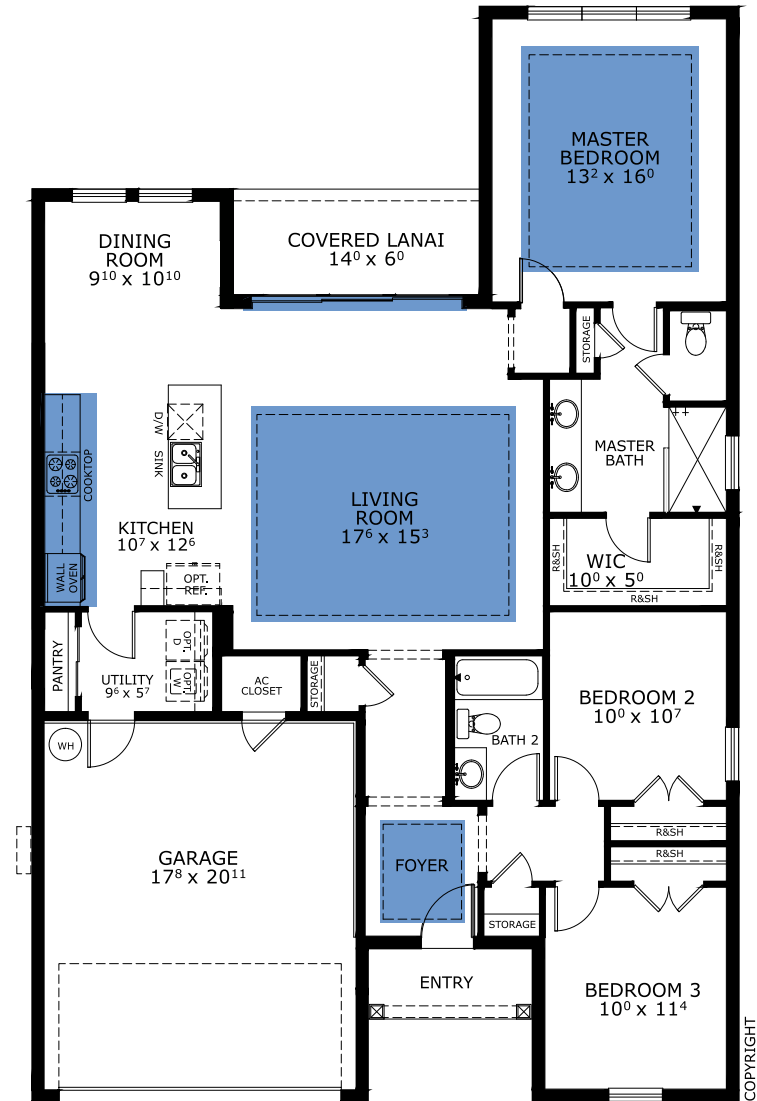
## THE VERNACULAR



## THE CRAFTSMAN



## FIRST FLOOR



COPYRIGHT

Customize this plan, it's easy! (844) 349-6401 or visit [ICIHomes.com](http://ICIHomes.com)

©1994-2025 ICI Homes™ is a registered trademark whose divisions operate under CBC1264300, CBC1262120, CRC1333091, CBC1262114, CBC1257263 and CBC1265743. Features may be plan specific and vary. Please consult a Sales Associate for specific feature information. All new ICI Homes come with a HWB 2-10 warranty. Certain elevations may have additional fees. Prices may not include lot premiums, upgrades, and options. Inventory home completion date may vary. All prices subject to change without notice. All plans are property of ICI Homes and cannot be copied or used without permission. Prices, promotions, incentives, features, options, amenities, floor plans, elevations, site maps, designs, materials, and dimensions are for illustrative purposes only and subject to change without notice. Plans should not be relied upon as representation express or implied of final sizes, locations, features or dimensions. Square footage and dimensions are estimated and may vary from description. All HERS ratings and savings are calculated by a third party energy rating service. Actual savings will depend on a number of factors, including but not limited to daily activities, home maintenance practices, household size, use of appliances, lighting and internal climate control systems, lot orientation, and surrounding climate and weather conditions. Created on 12/06/2025: \_\_\_\_\_ Garage Orientation R / L: \_\_\_\_\_

