



## THE KAUAI at OAKMONT

THE CRAFTSMAN

MODEL

**4 Bedrooms • 3.5 Bathrooms • 2-Car Garage • 2,595 ft<sup>2</sup> Living Area • 3,587 ft<sup>2</sup> Under Roof**

The Kauai floor plan offers 2,595 sq ft of open, inviting living space designed for both relaxation and functionality. This four-bedroom, 3.5-bath home features a bright, open living room with vaulted ceilings and a view to the second floor, creating an airy, spacious feel. The gourmet kitchen with an island and nearby dining room make entertaining effortless, while the main-floor master suite is a personal retreat with a luxurious bath and walk-in closet. Upstairs, a game room and three additional bedrooms provide room for family and guests. With ICI Homes' unique customization options, the Kauai floor plan can be tailored to fit your lifestyle perfectly, from flexible room configurations to enhanced outdoor spaces.

\* Renderings may vary from actual home. Please see disclaimer for more details.

**\$1,526**

**ESTIMATED SAVINGS**



This home has a HERS Score of 62 and is estimated to save you \$3,175 on your annual utility bills vs. a resale home.

**4 Bedrooms • 3.5 Bathrooms • 2-Car Garage**

## MODEL

## Oakmont

Classic Series | 50' Wide Lots | Rear Load - Lot 690

2582 SW 120TH DR

**Gainesville, FL, 32608**

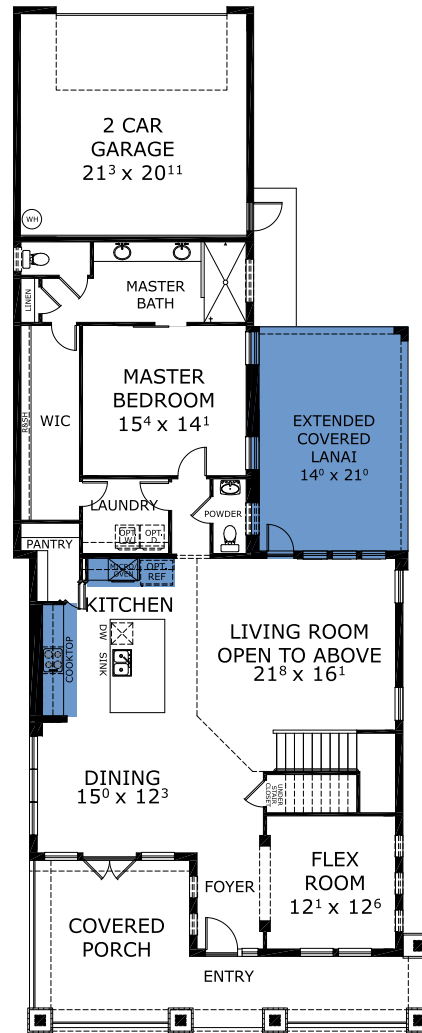
**Living Area: 2,595 ft<sup>2</sup>**

### Structural Options Included in This Home:

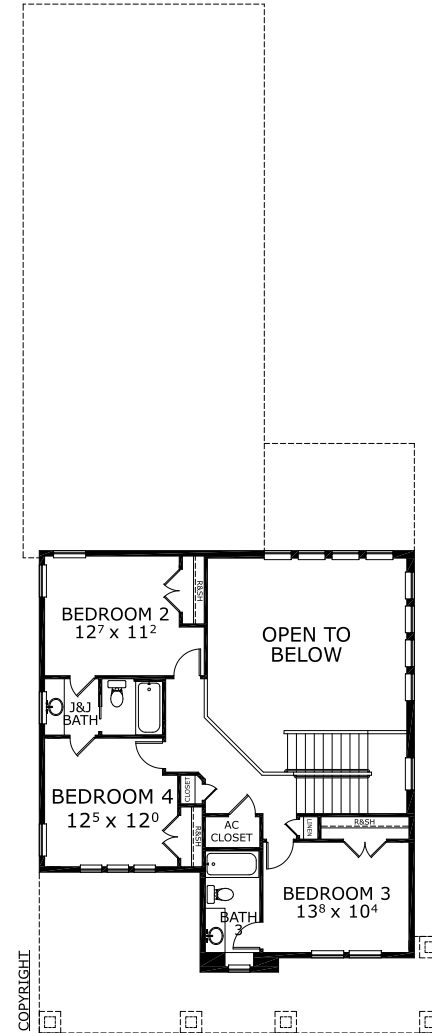
- ✓ Kitchen Deluxe - NFD
- ✓ Extended Covered Lanai
- ✓ Outlet-Floor Plug Brass
- ✓ Laundry Sink-Rough In
- ✓ Model Discount
- ✓ Tray @ Flex Room
- ✓ 12 Ceiling @ Main Living Areas
- ✓ Extend Closet In BR #2
- ✓ Convert Linen Closet Into Closet Space In BR #4
- ✓ Clarification change order for Driveway to be concrete
- ✓ Railing w/square pickets ILO kneewall at overlook
- ✓ 12 Ceiling in main living - Price Adjustment
- ✓ Extended lanai w/fireplace - Price Adjustment

**And much more....**

**From: \$588,900**



## FIRST-SECOND FLOOR



This Kauai is a Model! **Speak to a Sales Counselor (844) 349-6401** or visit [ICIHomes.com](http://ICIHomes.com)

©1994-2026 ICI Homes™ is a registered trademark whose divisions operate under CBC1267313, CBC1262114, CBC1262120, CBC1264300, CBC1265743, CBC1333091, and CBC1257263. Features may be plan specific and vary. Please consult a Sales Associate for specific feature information. All new ICI Homes come with a HWB 2-10 warranty. Certain elevations may have additional fees. Prices may not include lot premiums, upgrades, and options. Inventory home completion date may vary. All prices subject to change without notice. All plans are property of ICI Homes and cannot be copied or used without permission. Prices, promotions, incentives, features, options, amenities, floor plans, elevations, site maps, designs, materials, and dimensions are for illustrative purposes only and subject to change without notice. Plans should not be relied upon as representation express or implied of final sizes, locations, features or dimensions. Square footage and dimensions are estimated and may vary from description. All HERS ratings and savings are calculated by a third party energy rating service. Actual savings will depend on a number of factors, including but not limited to daily activities, home maintenance practices, household size, use of appliances, lighting and internal climate control systems, lot orientation, and surrounding climate and weather conditions. Created on 02/18/2026: Garage Orientation R / L:

