



THE MARABELLA at OAKMONT

THE MARABELLA - COASTAL

4 Bedrooms • 3.5 Bathrooms • 3-Car Garage • 3,150 ft² Living Area • 3,921 ft² Under Roof

The Marabella floor plan is designed to balance luxury and comfort with 4 bedrooms, 3.5 baths, and open-concept living areas perfect for gatherings. The master suite serves as a private retreat, complete with a spacious bath, dual vanities, and walk-in closet. A deluxe kitchen with a central island opens to the living room, ideal for entertaining or quiet evenings at home. The upstairs features a game room and three additional bedrooms, while the outdoor covered lanai extends your living space. ICI Homes' custom options make it easy to tailor Marabella to suit your lifestyle perfectly.

* Renderings may vary from actual home. Please see disclaimer for more details.

\$1,682

ESTIMATED SAVINGS



This home has a HERS Score of 57 and is estimated to save you \$3,125 on your annual utility bills vs. a resale home.

THE MARABELLA

4 Bedrooms • 3.5 Bathrooms • 3-Car Garage

Oakmont
Gainesville, FL

Available in
Oakmont 80

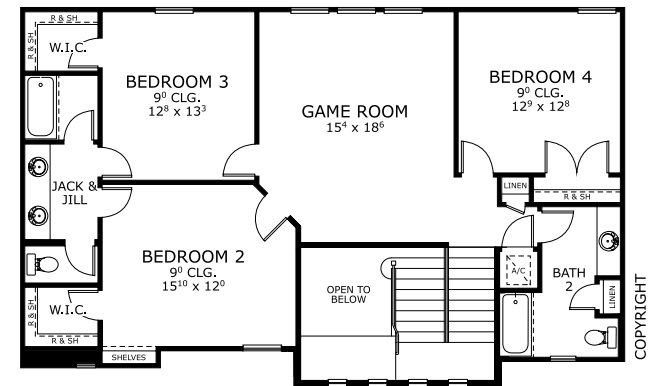
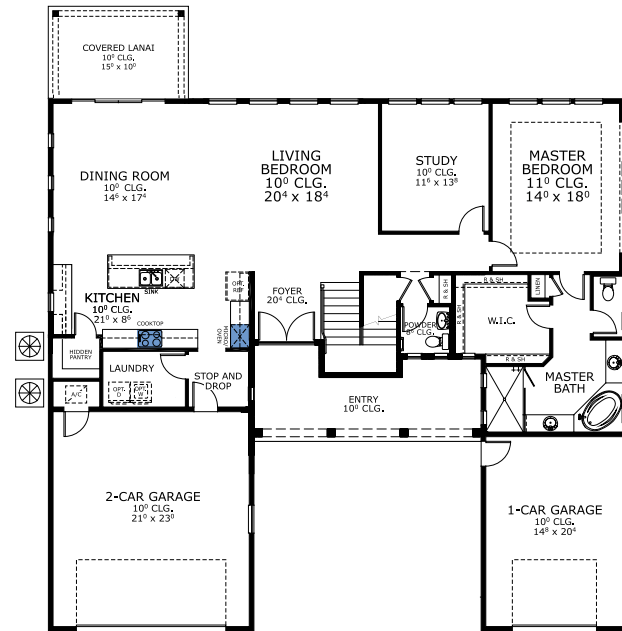
Living Area: 3,150 ft² Under Roof: 3,921 ft²

THE CRAFTSMAN



THE FARMHOUSE

FIRST-SECOND FLOOR



COPYRIGHT

Customize this plan, it's easy! (844) 349-6401 or visit ICIHomes.com

©1994-2026 ICI Homes™ is a registered trademark whose divisions operate under CB1267313, CB1262114, CB1262120, CB1264300, CB1265743, CB1333091, and CB1257263. Features may be plan specific and vary. Please consult a Sales Associate for specific feature information. All new ICI Homes come with a HBW 2-10 warranty. Certain elevations may have additional fees. Prices may not include lot premiums, upgrades, and options. Inventory home completion date may vary. All prices subject to change without notice. All plans are property of ICI Homes and cannot be copied or used without permission. Prices, promotions, incentives, features, options, amenities, floor plans, elevations, site maps, designs, materials, and dimensions are for illustrative purposes only and subject to change without notice. Plans should not be relied upon as representation express or implied of final sizes, locations, features or dimensions. Square footage and dimensions are estimated and may vary from description. All HERS ratings and savings are calculated by a third party energy rating service. Actual savings will depend on a number of factors, including but not limited to daily activities, home maintenance practices, household size, use of appliances, lighting and internal climate control systems, lot orientation, and surrounding climate and weather conditions. Created on 02/18/2026. Garage Orientation R / L:

