



## THE MONACO at OAKMONT

THE MONACO - MODERN II

**4 Bedrooms • 4 Bathrooms • 4-Car Garage • 3,832 ft<sup>2</sup> Living Area • 5,411 ft<sup>2</sup> Under Roof**

The Monaco floor plan combines elegance and function across 3,832 square feet, with four bedrooms, four baths, and a four-car garage. The open living space flows seamlessly from the kitchen with a hidden pantry and island, to the airy living room, and out to the 35' by 15' covered lanai. The master suite offers a private retreat with dual walk-in closets, a spa-like bath, and an adjacent exercise room. With customization options like a game room or wine closet, the Monaco can be tailored to fit your lifestyle, providing a luxurious space for any occasion.

\* Renderings may vary from actual home. Please see disclaimer for more details.

**\$3,277**

**ESTIMATED SAVINGS**



This home has a HERS Score of 59 and is estimated to save you \$3,277 on your annual utility bills vs. a resale home.

# THE MONACO

4 Bedrooms • 4 Bathrooms • 4-Car Garage

**Oakmont** Available in  
Gainesville, FL Oakmont 100

Living Area: 3,832 ft<sup>2</sup> Under Roof: 5,411 ft<sup>2</sup>

## THE MEDITERRANEAN



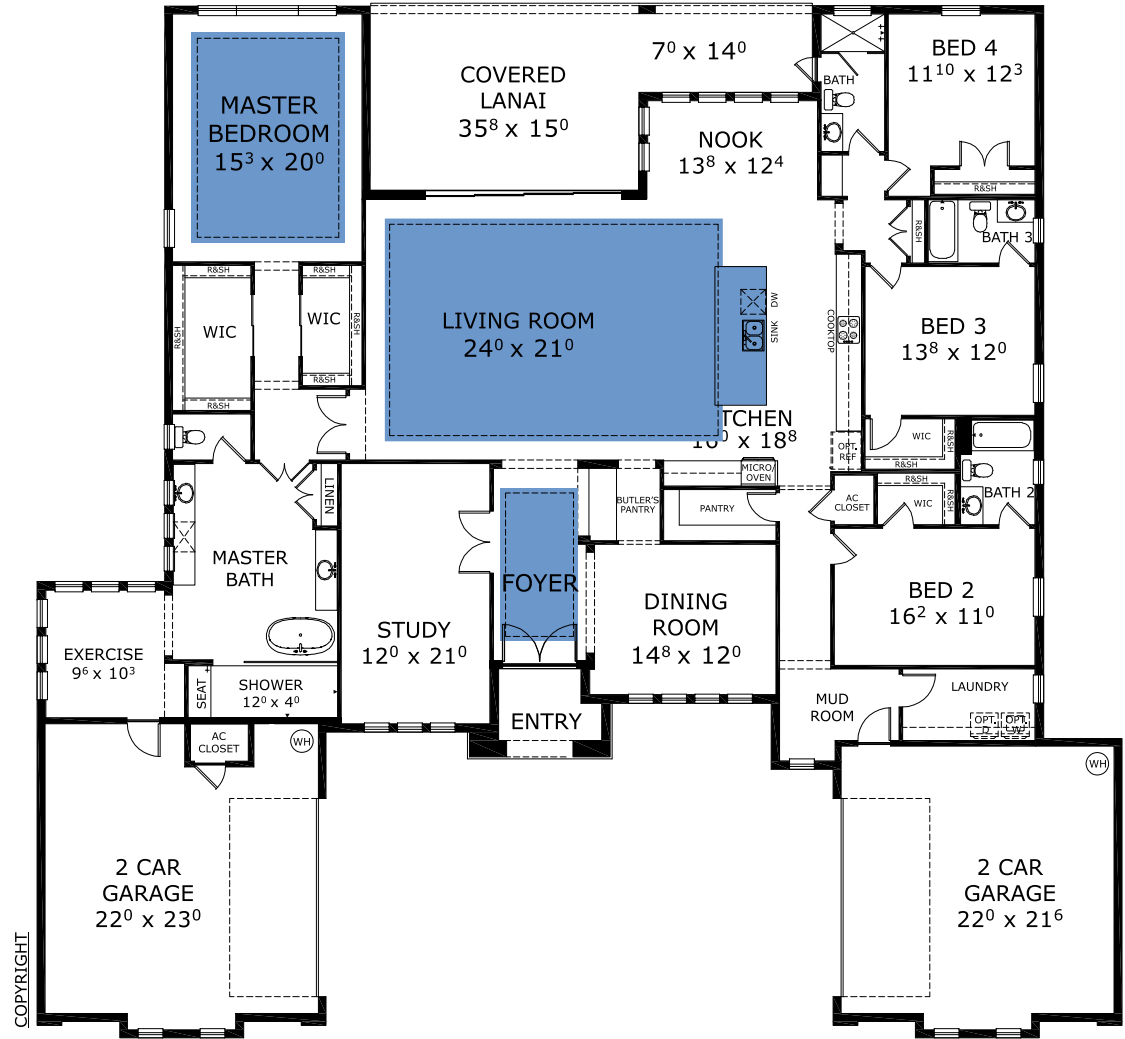
## THE FARMHOUSE



## THE PRAIRIE MODERN



## FIRST FLOOR



COPYRIGHT

Customize this plan, it's easy! (844) 349-6401 or visit [ICIHomes.com](https://www.ICHomes.com)

©1994-2025 ICI Homes™ is a registered trademark whose divisions operate under CBC1264300, CBC1262120, CRC1333091, CBC1262114, CBC1257263 and CBC1265743. Features may be plan specific and vary. Please consult a Sales Associate for specific feature information. All new ICI Homes come with a HBW 2-10 warranty. Certain elevations may have additional fees. Prices may not include lot premiums, upgrades, and options. Inventory home completion date may vary. All prices subject to change without notice. All plans are property of ICI Homes and cannot be copied or used without permission. Prices, promotions, incentives, features, options, amenities, floor plans, elevations, site maps, designs, materials, and dimensions are for illustrative purposes only and subject to change without notice. Plans should not be relied upon as representation express or implied of final sizes, locations, features or dimensions. Square footage and dimensions are estimated and may vary from description. All HERS ratings and savings are calculated by a third party energy rating service. Actual savings will depend on a number of factors, including but not limited to daily activities, home maintenance practices, household size, use of appliances, lighting and internal climate control systems, lot orientation, and surrounding climate and weather conditions. Created on 12/06/2025: \_\_\_\_\_ Garage Orientation R / L: \_\_\_\_\_

