



## THE PALOS VERDES at OAKMONT

THE PALOS VERDES - CRAFTSMAN

FINALIZED CONTRACT

**4 Bedrooms • 3.5 Bathrooms • 3-Car Garage • 3,196 ft<sup>2</sup> Living Area • 4,001 ft<sup>2</sup> Under Roof**

The Palos Verdes floor plan combines elegance and everyday functionality in a beautifully open design. A grand foyer with a two-story ceiling welcomes you, leading into an inviting living room that flows effortlessly into the dining area and gourmet kitchen. The main-floor master suite offers a luxurious retreat, complete with a spa-like bath. Outside, a covered lanai extends your living space, perfect for gatherings or quiet relaxation. Upstairs, a game room and three additional bedrooms with walk-in closets ensure ample space for family and guests. With ICI Homes' customization options, make the Palos Verdes truly your own.

\* Renderings may vary from actual home. Please see disclaimer for more details.

**\$2,924**

**ESTIMATED SAVINGS**



This home has a HERS Score of 60 and is estimated to save you \$2,924 on your annual utility bills vs. a resale home.

# THE PALOS VERDES

4 Bedrooms • 3.5 Bathrooms • 3-Car Garage

FINALIZED CONTRACT

Oakmont  
Pinnacle Series | 80' Wide Lots - Lot 440  
10761 SW 34th Road  
Gainesville, FL, 32608

Living Area: 3,196 ft<sup>2</sup>

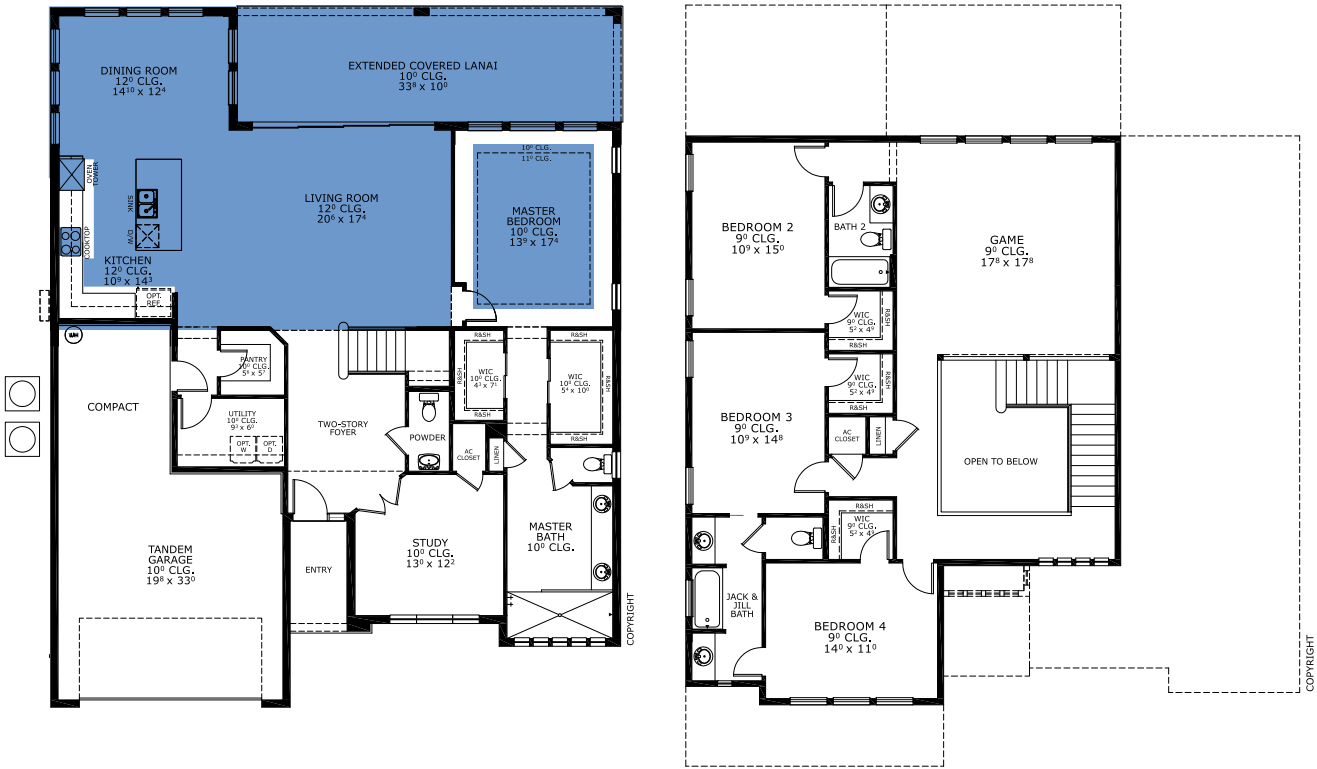
### Structural Options Included in This Home:

- ✓ Kitchen Deluxe - NFD
- ✓ Extended Covered Lanai
- ✓ Summer Kitchen Rough In w/o Hood
- ✓ Summer Kitchen-Knee Wall Only per LF
- ✓ Ceiling 12 @ Kitchen/Living/Dining
- ✓ Tray Ceiling - Master Suite

And much more....

Priced at: **\$875,000**

## FIRST-SECOND FLOOR



This Palos Verdes is a Finalized Contract! [Speak to a Sales Counselor \(844\) 349-6401](#) or visit [ICIHomes.com](#)

©1994-2025 ICI Homes™ is a registered trademark whose divisions operate under CBC1264300, CBC1262120, CRC1333091, CBC1262114, CBC1257263 and CBC1265743. Features may be plan specific and vary. Please consult a Sales Associate for specific feature information. All new ICI Homes come with a HBW 2-10 warranty. Certain elevations may have additional fees. Prices may not include lot premiums, upgrades, and options. Inventory home completion date may vary. All prices subject to change without notice. All plans are property of ICI Homes and cannot be copied or used without permission. Prices, promotions, incentives, features, options, amenities, floor plans, elevations, site maps, designs, materials, and dimensions are for illustrative purposes only and subject to change without notice. Plans should not be relied upon as representation express or implied of final sizes, locations, features or dimensions. Square footage and dimensions are estimated and may vary from description. All HERS ratings and savings are calculated by a third party energy rating service. Actual savings will depend on a number of factors, including but not limited to daily activities, home maintenance practices, household size, use of appliances, lighting and internal climate control systems, lot orientation, and surrounding climate and weather conditions. Created on 12/06/2025: \_\_\_\_\_ Garage Orientation R / L: \_\_\_\_\_

