



THE ST. TROPEZ at BROWNS LANDING

THE ST. TROPEZ - MODERN

3 Bedrooms • 3.5 Bathrooms • 4-Car Garage • 4,101 ft² Living Area • 6,186 ft² Under Roof

The St. Tropez, at 4,101 square feet, is designed for luxury and spaciousness. Enter through a grand foyer into an open living area with a 27' x 31' living room, dining space, and deluxe kitchen. This layout, enhanced by a tray ceiling and glass doors to a covered lanai, is perfect for entertaining. The private master suite features a luxurious bath and walk-in closet, while bedrooms two and three share a separate wing. With ICI Homes' flexible customization options, the St. Tropez can be personalized to suit your needs, from room layouts to elegant finishing touches.

* Renderings may vary from actual home. Please see disclaimer for more details.

\$3,244

ESTIMATED SAVINGS



This home has a HERS Score of 69 and is estimated to save you \$3,244 on your annual utility bills vs. a resale home.

THE ST. TROPEZ

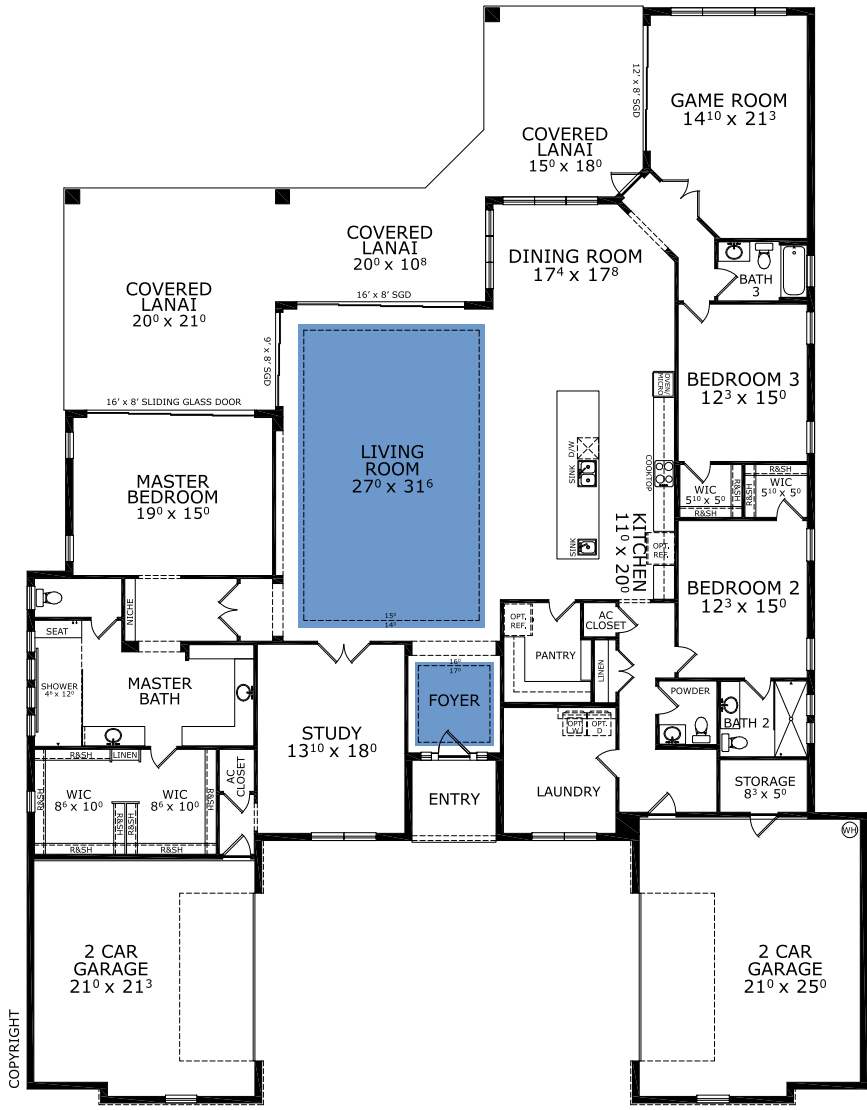
3 Bedrooms • 3.5 Bathrooms • 4-Car Garage

Browns Landing **Available in**
Port Orange, FL Estates at Browns Landing OYL

Living Area: 4,101 ft² **Under Roof:** 6,186 ft²



FIRST FLOOR



Customize this plan, it's easy! (844) 349-6401 or visit [ICIHomes.com](https://www.ICIHomes.com)

©1994-2025 ICI Homes™ is a registered trademark whose divisions operate under CBC1264300, CBC1262120, CRC1333091, CBC1262114, CBC1257263 and CBC1265743. Features may be plan specific and vary. Please consult a Sales Associate for specific feature information. All new ICI Homes come with a HBW 2-10 warranty. Certain elevations may have additional fees. Prices may not include lot premiums, upgrades, and options. Inventory home completion date may vary. All prices subject to change without notice. All plans are property of ICI Homes and cannot be copied or used without permission. Prices, promotions, incentives, features, options, amenities, floor plans, elevations, site maps, designs, materials, and dimensions are for illustrative purposes only and subject to change without notice. Plans should not be relied upon as representation express or implied of final sizes, locations, features or dimensions. Square footage and dimensions are estimated and may vary from description. All HERS ratings and savings are calculated by a third party energy rating service. Actual savings will depend on a number of factors, including but not limited to daily activities, home maintenance practices, household size, use of appliances, lighting and internal climate control systems, lot orientation, and surrounding climate and weather conditions. Created on 12/06/2025: _____ Garage Orientation R / L: _____

