



THE VISTA COSTERA at MARINA DEL PALMA

THE MEDITERRANEAN

4 Bedrooms • 3.5 Bathrooms • 3-Car Garage • 3,929 ft² Living Area • 4,936 ft² Under Roof

The Vista Costera is a 4-bedroom, 3.5-bath haven with 3,929 square feet designed for your lifestyle. From the grand entry to the spacious, open living room, this home offers elegance and flexibility. The chef's kitchen features a central island, hidden pantry, and butler's pantry, perfect for entertaining. The first-floor master suite offers a private, luxurious retreat, while the upstairs includes a second master, a game room, and two more bedrooms. Every detail of this home can be tailored by ICI Homes to meet your needs, ensuring that your home is as unique as you are.

* Renderings may vary from actual home. Please see disclaimer for more details.

\$1,626

ESTIMATED SAVINGS



This home has a HERS Score of 68 and is estimated to save you \$3,504 on your annual utility bills vs. a resale home.

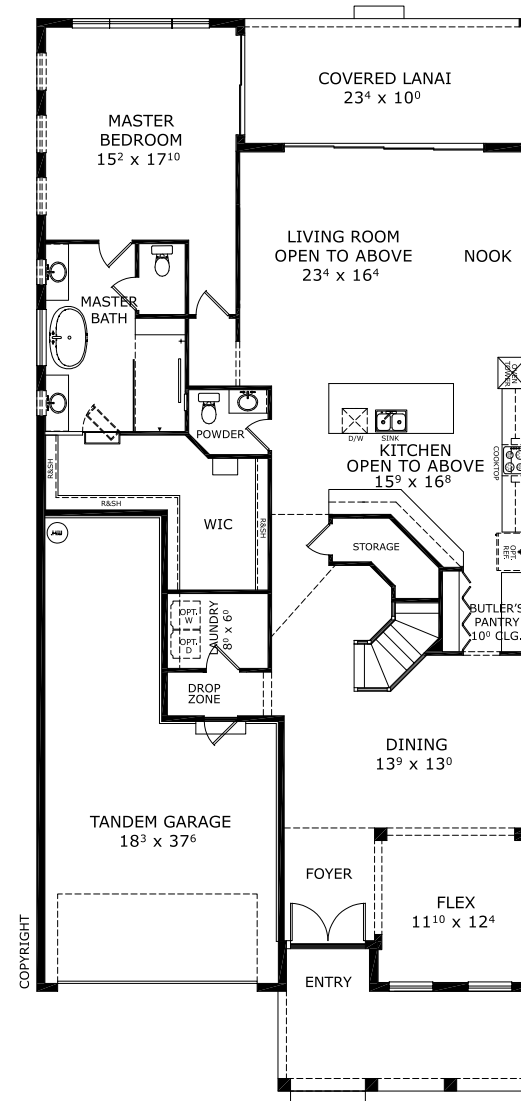
THE VISTA COSTERA

4 Bedrooms • 3.5 Bathrooms • 3-Car Garage

Marina Del Palma Available In
Palm Coast, FL Marina Del Palma

Living Area: 3,929 ft² **Under Roof:** 4,936 ft²

FIRST FLOOR



Customize this plan, it's easy! (844) 349-6401 or visit ICIHomes.com

©1994-2026 ICI Homes™ is a registered trademark whose divisions operate under CBC1267313, CBC1262114, CBC1262120, CBC1264300, CBC1265743, CRC1333091, and CBC1257263. Features may be plan specific and vary. Please consult a Sales Associate for specific feature information. All new ICI Homes come with a HBW 2-10 warranty. Certain elevations may have additional fees. Prices may not include lot premiums, upgrades, and options. Inventory home completion date may vary. All prices subject to change without notice. All plans are property of ICI Homes and cannot be copied or used without permission. Prices, promotions, incentives, features, options, amenities, floor plans, elevations, site maps, designs, materials, and dimensions are for illustrative purposes only and subject to change without notice. Plans should not be relied upon as representation express or implied of final sizes, locations, features or dimensions. Square footage and dimensions are estimated and may vary from description. All HERS ratings and savings are calculated by a third party energy rating service. Actual savings will depend on a number of factors, including but not limited to daily activities, home maintenance practices, household size, use of appliances, lighting and internal climate control systems, lot orientation, and surrounding climate and weather conditions. Created on 04/17/2026: Garage Orientation R / L:



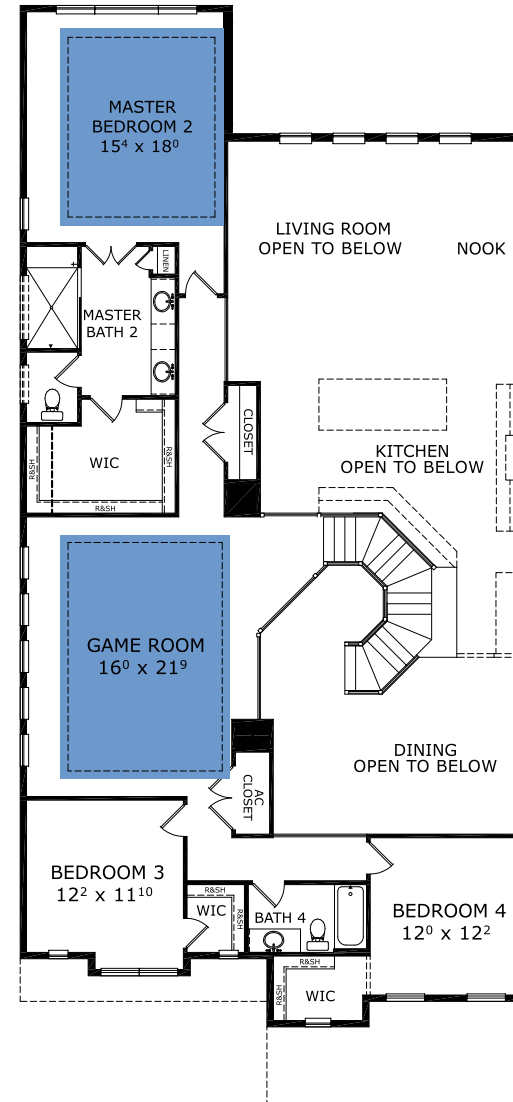
THE VISTA COSTERA

4 Bedrooms • 3.5 Bathrooms • 3-Car Garage

Marina Del Palma Available In
Palm Coast, FL Marina Del Palma

Living Area: 3,929 ft² **Under Roof:** 4,936 ft²

SECOND FLOOR



Customize this plan, it's easy! (844) 349-6401 or visit ICIHomes.com

©1994-2026 ICI Homes™ is a registered trademark whose divisions operate under CBC1267313, CBC1262114, CBC1262120, CBC1264300, CBC1265743, CRC1333091, and CBC1257263. Features may be plan specific and vary. Please consult a Sales Associate for specific feature information. All new ICI Homes come with a HBW 2-10 warranty. Certain elevations may have additional fees. Prices may not include lot premiums, upgrades, and options. Inventory home completion date may vary. All prices subject to change without notice. All plans are property of ICI Homes and cannot be copied or used without permission. Prices, promotions, incentives, features, options, amenities, floor plans, elevations, site maps, designs, materials, and dimensions are for illustrative purposes only and subject to change without notice. Plans should not be relied upon as representation express or implied of final sizes, locations, features or dimensions. Square footage and dimensions are estimated and may vary from description. All HERS ratings and savings are calculated by a third party energy rating service. Actual savings will depend on a number of factors, including but not limited to daily activities, home maintenance practices, household size, use of appliances, lighting and internal climate control systems, lot orientation, and surrounding climate and weather conditions. Created on 04/17/2026: Garage Orientation R / L:

